

Release Notes & Installation Instructions

Medtech32

ACC Subsidy Updates for Clinical Services

(Effective 1 July 2019)



These release notes contain important information for Medtech32 users. Please ensure that they are circulated amongst all relevant staff. We suggest that they are filed safely for future reference.

ACC Subsidy Updates – July 2019

A price increase of 1.92% for Clinical Services has been advised by ACC.

This update will install the following ACC subsidy amendments for the **Clinical Services Contract**, effective from **1 July 2019**, within Medtech32:

Contract Class	Service Item Code	Item description	Flat Rate (GST inclusive)	Secondary Amount (GST inclusive)	Per Minute Rate (GST inclusive)
Clinical Services	CS10	Clinical Services - Simple Assessment (Initial)	\$ 200.09	\$ 200.09	N/A
Clinical Services	CS20	Clinical Services - Complex Assessment (Initial)	\$ 306.57	\$ 306.57	N/A
Clinical Services	CS25	Clinical Serv: Simple Pre-op Anaes Assmt Initial	\$ 200.09	\$ 200.09	N/A
Clinical Services	CS26	Clinical Serv: Complex Pre-op Anaes Assmt Initial	\$ 306.57	\$ 306.57	N/A
Clinical Services	CS40	Clinical Services - Second Opinion Assessment	\$ 200.09	\$ 200.09	N/A
Clinical Services	CS50	Clinical Services - Reassessment	\$ 200.09	\$ 200.09	N/A
Clinical Services	CS61	Clinical Services - Subsequent Assessment: Simple	\$ 135.52	\$ 135.52	N/A
Clinical Services	CS62	Clinical Services - Subsequent Assessment: Complex	\$ 200.09	\$ 200.09	N/A
Clinical Services	CS70	Clinical Serv: Anaesthetic Long Distance Consult	\$ 69.15	\$ 69.15	N/A
Clinical Services	CS83	Clinical Services: Neurophysiological consultation	\$ 565.27	\$ 565.27	N/A
Clinical Services	CS84	Clinical Serv: Simple neurophysiological follow-up	\$ 189.18	\$ 189.18	N/A

Contract Class	Service Item Code	Item description	Flat Rate (GST inclusive)	Secondary Amount (GST inclusive)	Per Minute Rate (GST inclusive)
Clinical Services	CS85	Clinical Ser: Complex neurophysiological follow-up	\$ 565.27	\$ 565.27	N/A
Clinical Services	CS90	Clinical Services - Second Opinion Assmt Complex	\$ 306.57	\$ 306.57	N/A
Clinical Services	CSD1	Clinical Services - Echocardiogram	\$ 608.87	\$ 608.87	N/A
Clinical Services	CSD2	Clinical Services - Stress Echo	\$ 1,059.55	\$ 1,059.55	N/A
Clinical Services	CSD3	Clinical Services - Respiratory Spirometry	\$ 101.10	\$ 101.10	N/A
Clinical Services	CSD4	Clinical Services - Exercise Treadmill	\$ 480.02	\$ 480.02	N/A
Clinical Services	ECG	Clinical Services: Electrocardiogram	\$ 69.15	\$ 69.15	N/A
Clinical Services	CD10	Clinical Services: Flow and residual test	\$ 145.39	\$ 145.39	N/A
Clinical Services	CD40	Clinical Services: OCT scan - unilateral (ophthal)	\$ 250.96	\$ 250.96	N/A
Clinical Services	CD41	Clinical Services: OCT scan - bilateral (ophthal)	\$ 305.42	\$ 305.42	N/A
Clinical Services	CD42	Clinical Services: Visual Field Test - unilateral	\$ 89.08	\$ 89.08	N/A
Clinical Services	CD43	Clinical Services: Visual Field Test - bilateral	\$ 114.10	\$ 114.10	N/A
Clinical Services	CD44	Clinical Services: Orthoptic assessment - child	\$ 148.36	\$ 148.36	N/A
Clinical Services	CD45	Clinical Services: Orthoptic assessment - adult	\$ 171.61	\$ 171.61	N/A
Clinical Services	CD46	Clinical Services: Fluorescein angiography (eye)	\$ 583.81	\$ 583.81	N/A

Contract Class	Service Item Code	Item description	Flat Rate (GST inclusive)	Secondary Amount (GST inclusive)	Per Minute Rate (GST inclusive)
Clinical Services	CD47	Corneal Topography	\$ 211.47	\$ 211.47	N/A
Clinical Services	CSP1	Transforaminal injn steroid always w image intens.	\$ 1,039.35	\$ 1,039.35	N/A
Clinical Services	CSP2	Lumbar epidural steroid w or w/o local anaesthetic	\$ 643.14	\$ 643.14	N/A
Clinical Services	CSP3	Lumbar epidural steroid w or w/o LA, with imaging	\$ 1,039.35	\$ 1,039.35	N/A
Clinical Services	CSP4	Caudal injectn steroid w or w/o local anaesthetic	\$ 643.14	\$ 643.14	N/A
Clinical Services	CSP5	Caudal injection steroid w or w/o LA, with imaging	\$ 1,039.35	\$ 1,039.35	N/A
Clinical Services	CSP6	Injection of steroid &/or LA into joint or bursa	\$ 64.02	\$ 64.02	N/A
Clinical Services	CSP7	Injctn of steroid &/or LA in joint under imaging	\$ 512.27	\$ 512.27	N/A
Clinical Services	CSP8	Injctn of anaes agent around peripheral nerves	\$ 64.02	\$ 64.02	N/A
Clinical Services	CSP9	Injn anaes agent around periph nerve w image int.	\$ 448.24	\$ 448.24	N/A
Clinical Services	CSPX	Injn anaes agent around Sciatic nerve w image int.	\$ 512.27	\$ 512.27	N/A
Clinical Services	CS11	Sacro/Facet joint injn steroid &/or LA under imaging	\$ 791.83	\$ 791.83	N/A
Clinical Services	CS12	Lat atlantoaxial injn steroid &/or LA undr imaging	\$ 1,170.22	\$ 1,170.22	N/A
Clinical Services	CS13	Hip Joint: Complex Injn steroid/LA agent w imaging	\$ 1,039.35	\$ 1,039.35	N/A

Contract Class	Service Item Code	Item description	Flat Rate (GST inclusive)	Secondary Amount (GST inclusive)	Per Minute Rate (GST inclusive)
Clinical Services	CST1	Clinical Services - Removal of wire/screws	\$ 23.05	\$ 23.05	N/A
Clinical Services	CT21	Clinical Ser: Reapplicatn casts/splints above knee	\$ 215.11	\$ 215.11	N/A
Clinical Services	CT22	Clinical Ser: Reapplicatn cast/splint above elbow	\$ 179.25	\$ 179.25	N/A
Clinical Services	CT31	Clinical Ser: Reapplicatn casts/splints below knee	\$ 179.25	\$ 179.25	N/A
Clinical Services	CT32	Clinical Ser: Reapplicatn cast/splint below elbow	\$ 155.32	\$ 155.32	N/A
Clinical Services	CST4	Clinical Services - Injections or Joint Aspiration	\$ 30.73	\$ 30.73	N/A
Clinical Services	CST5	Clinical Services - Isolated Nerve Block	\$ 23.05	\$ 23.05	N/A
Clinical Services	CST6	Clinical Ser: Reg block (not LA)/Compartment pressur	\$ 153.70	\$ 153.70	N/A
Clinical Services	CT10	Clinical Service: Complex Injection into the joint	\$ 71.15	\$ 71.15	N/A
Clinical Services	CT11	Clinical Ser: Reduc displaced/ fractured nasal bone	\$ 728.48	\$ 728.48	N/A
Clinical Services	CT12	Clinical Services - Flexi cystoscopy	\$ 785.66	\$ 785.66	N/A
Clinical Services	CT13	Clinical Services - Flexi cystoscopy w dilatation	\$ 1,083.82	\$ 1,083.82	N/A
Clinical Services	CT14	Clinical Services-Flexi cystoscopy w botulinum tox	\$ 3,310.19	\$ 3,310.19	N/A
Clinical Services	CT15	Clinical Services - Supra Pubic Catheter Insertion	\$ 590.38	\$ 590.38	N/A

Contract Class	Service Item Code	Item description	Flat Rate (GST inclusive)	Secondary Amount (GST inclusive)	Per Minute Rate (GST inclusive)
Clinical Services	CT16	Clinical Services - Supra Pubic Catheter Change	\$ 590.38	\$ 590.38	N/A
Clinical Services	CT17	Clinical Services: Removal foreign body (not eye)	\$ 497.65	\$ 497.65	N/A
Clinical Services	CT23	Clinical Services: Revision of scar/s <5cm	\$ 766.61	\$ 766.61	N/A
Clinical Services	CT24	Clinical Services: Revision of scar/s 5-10cm	\$ 1,156.50	\$ 1,156.50	N/A
Clinical Services	CT25	Clinical Services: Revision of scar/s 10-20cm	\$ 1,453.89	\$ 1,453.89	N/A
Clinical Services	CT26	Clinical Services: Minor finger surgery	\$ 497.65	\$ 497.65	N/A
Clinical Services	CT27	Clinical Services: Repair/reconstruct of nail bed	\$ 549.77	\$ 549.77	N/A
Clinical Services	CT28	Clinical Services: Excisn post trauma incl cyst/s	\$ 753.41	\$ 753.41	N/A
Clinical Services	CT40	Clinical Services: Lid/Adnexa -eyelid surg, minor	\$ 821.63	\$ 821.63	N/A
Clinical Services	CT41	Clinical Services: Removal foreign body - eye	\$ 434.54	\$ 434.54	N/A
Clinical Services	CT42	Clinical Services: YAG Laser Capsulotomy	\$ 491.83	\$ 491.83	N/A
Clinical Services	CT60	Clinical Services: Tympanostomy/Myringotomy	\$ 634.42	\$ 634.42	N/A
Clinical Services	CT61	Clinical Services: Myringoplasty -simple +/- patch	\$ 1,436.84	\$ 1,436.84	N/A
Clinical Services	CT80	Clinical Services: Laser tmt (derma/plastics only)	\$ 1,127.12	\$ 1,127.12	N/A

Contract Class	Service Item Code	Item description	Flat Rate (GST inclusive)	Secondary Amount (GST inclusive)	Per Minute Rate (GST inclusive)
Clinical Services	CSA1	Clinical Services: Std Med Single Discipline Assmt	\$ 763.32	\$ 763.32	N/A
Clinical Services	CSA2	Clinical Services: Complex Med Single Discip Assmt	\$ 1,115.14	\$ 1,115.14	N/A
Clinical Services	CSA3	Clinical Services: Exceptional Single Discip Assmt	N/A	N/A	\$ 5.14
Clinical Services	CSM1	Clinical Services - Standard Medical Case Review	\$ 1,251.84	\$ 1,251.84	N/A
Clinical Services	CSM2	Clinical Services - Complex Medical Case Review	\$ 1,859.87	\$ 1,859.87	N/A
Clinical Services	CSM3	Clinical Services -Exceptional Medical Case Review	N/A	N/A	\$ 5.14
Clinical Services	CSN1	Clinical Services - Did Not Attend MCR	\$ 543.54	\$ 543.54	N/A
Clinical Services	CSU	Clinical Services - Unbooked appointment time	N/A	N/A	\$2.55
Clinical Services	CSE1	Clinical Services - Moonboots prov by Specialists	Actual & Reasonable upto \$300		
Clinical Services	CSE2	Clinical Services - Simple Orthotics	Actual & Reasonable upto \$300		

Installation Prerequisites Checklist

1.	Check the current installed Medtech32 version [Help ▶ About Medtech32]. The practice must be on the following Medtech32 version: <ul style="list-style-type: none"> • 22.16 Build 5963 (or higher) 	<input type="checkbox"/>
2.	Users are not required to be logged out before running this release. However, users will need to log out and then login for these changes to take effect.	<input type="checkbox"/>
3.	Ensure you are logged onto Windows with Full Administrative rights when performing ANY installation, update or maintenance.	<input type="checkbox"/>
4.	Ensure you are logged onto the Medtech32 Server.	<input type="checkbox"/>
5.	Check that this document has been reviewed and understood.	<input type="checkbox"/>

Location of Installer

For practices that are registered on the Insight Customer Portal

- 1) Visit the Insight Customer Portal at:
<https://insight.medtechglobal.com/downloads/medtech32/>
- 2) Enter your User Name and Password
- 3) Locate the update called **ACC Clinical Services Subsidy Update (July 2019)**
- 4) Review the release notes (inc. upgrade instructions) for the update.
- 5) Download and install the update when convenient for your.

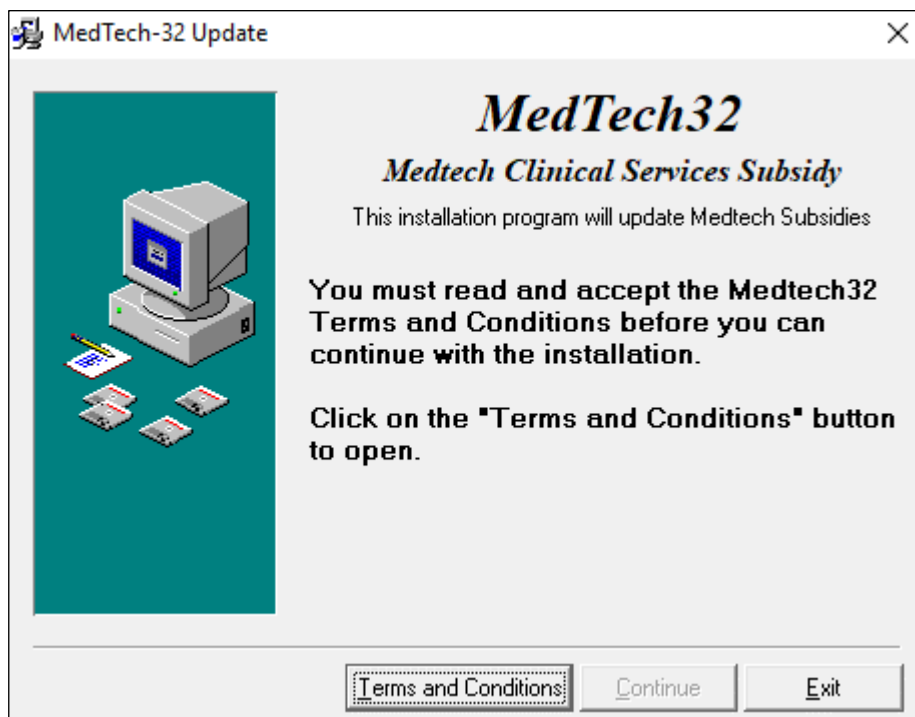
For practices that are NOT registered on the Insight Customer Portal

- 1) Visit our website at <https://www.medtechglobal.com/nz/support-nz/mt32-downloads-nz/>
- 2) Locate the update called **ACC Clinical Services Subsidy Update (July 2019)**
- 3) Review the release notes (inc. upgrade instructions) for the update.
- 4) Download and install the update when convenient for your.

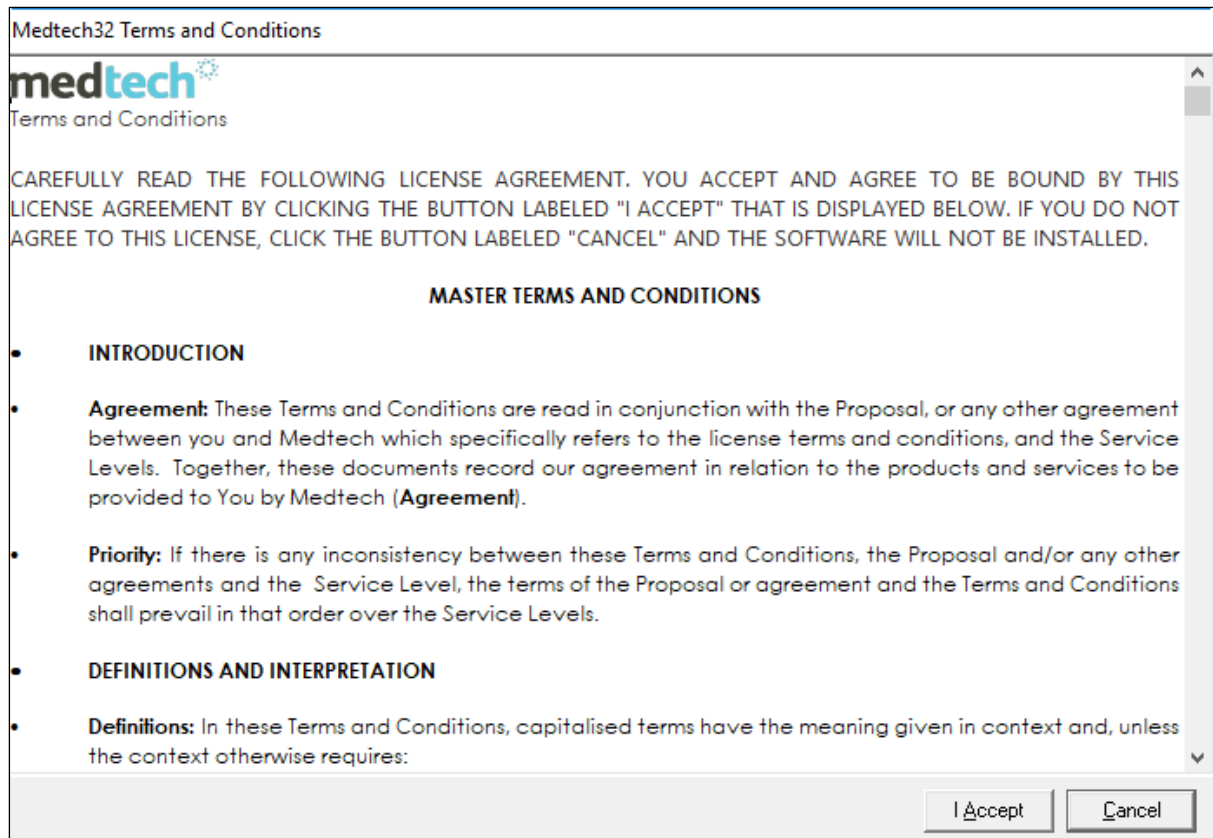
Medtech Cloud: Practices will be updated automatically to this release, and will be informed via an upgrade schedule notification.

Medtech32 ACC Subsidy Update Installation

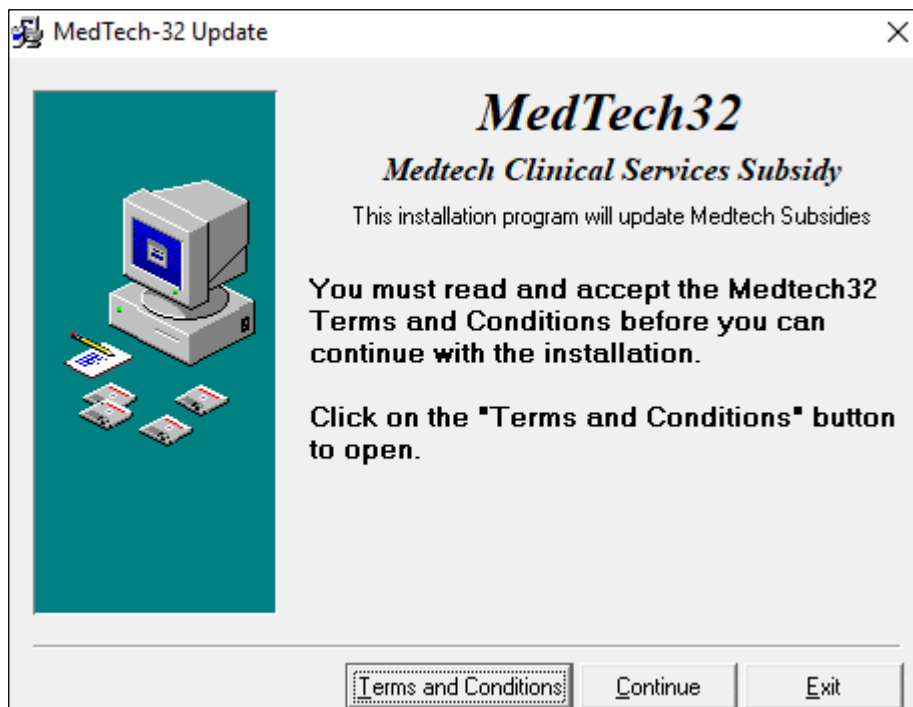
1. Ensure that you have completed and checked all the items in the **Installation Prerequisites Checklist** above.
2. Download the **ACC Clinical Services Subsidy Update (July 2019) Installer** as described above.
3. Double-click on the **EXE** to start the installation process.
4. If any security warnings appear in your environment, select **Run**.
5. The **ACC Subsidy Update 1st July 2019** Installation Wizard will appear.



6. Click the **'Terms and Conditions'** button to proceed; the 'Medtech32 Terms and Conditions' window is displayed.



7. Click the **'I Accept'** button once you have read and understood the Terms and Conditions.
8. Click on the **'Continue'** button to proceed with the installation.



9. Once the update is completed, the following message will be displayed.



10. Click on **OK** to close the installation screen.

11. Immediately contact **Medtech Support** if you encounter any problems during the installation process.

For further information, or any other queries regarding the changes in this release, please contact Medtech Support via:

- **Insight:** <https://insight.medtechglobal.com/>
- **Online Chat:** www.medtechglobal.com