

## Upgrade Guide

### Medtech Evolution

Version 1.15 – Build 1.15.0.18 HF (Services Update)

(February 2019)



*These instructions contain important information for all Medtech Evolution users and IT Support personnel. We suggest that these notes are filed safely for future reference.*

## Table of Contents

Prerequisites Checklist	2
Locating the Installer	4
Upgrade Guide	5
APPLICATION SERVICES UPGRADE	5
MEDTECH SERVICES	5
Post-Installation Checklist	6

## Prerequisites Checklist

1	Ensure that Medtech Evolution Version <b>1.15.0.18</b> (minimum) is installed	<input type="checkbox"/>
2	Ensure that Medtech Services <b>Version 1.15.0.18</b> (minimum) is installed	<input type="checkbox"/>
3	<p>Ensure all users (including remote users):</p> <ul style="list-style-type: none"> <li>○ Have logged out of Medtech Evolution</li> <li>○ All scheduled utilities, backup or maintenance tasks, and third party interfaces that require access to the databases have been stopped.</li> </ul>	<input type="checkbox"/>
4	<p>Ensure following utilities/services are stopped (services.msc):</p> <ul style="list-style-type: none"> <li>○ Medtech Message Transfer Service</li> <li>○ Medtech NIR Transfer Service</li> <li>○ Medtech Shell Service</li> <li>○ Medtech Fax Service</li> <li>○ Medtech Scheduling Service</li> <li>○ Medtech Diagnostic Service</li> </ul> <p>Ensure following services are stopped IF the practice has <u>Healthone</u> integration:</p> <ul style="list-style-type: none"> <li>○ Medtech: H1PluginService</li> <li>○ Medtech: Evo Api Service (if available – please see Note below)</li> </ul> <p><b>Please Note:</b> The Medtech: Evo Api Service will only be available in specific practices. If your practice <u>does not</u> have this service you can continue with upgrade.</p>	<input type="checkbox"/>

## Locating the Installer

Medtech Evolution General Practice Version 1.15 Services Update is available for download as follows:

Installed to	32-Bit	64-Bit	Purpose
Application Services Server	<b>Medtech Services Update 1.15.0.18 HF</b>		Upgrade the Medtech Services

**NOTE:** Packages are compatible to both 32-Bit and 64-Bit environments (automatically detected)

### Important Note

There is no separate installer provided for application as the database server installation contains both the database and application upgrade

# Upgrade Guide

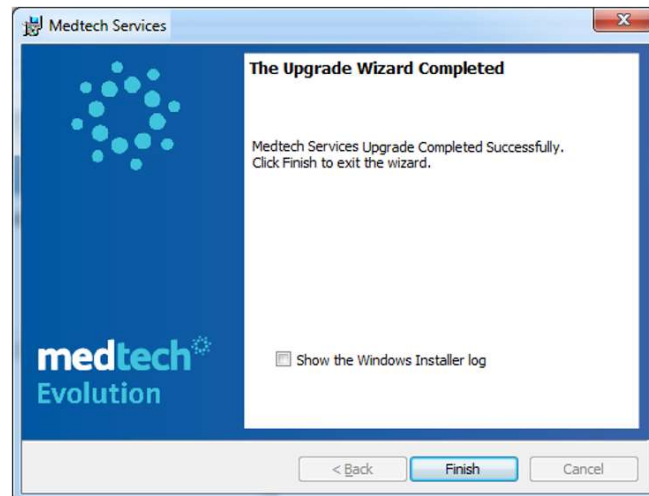
## Application Services Upgrade

### Medtech Services

1. Log on to the application services server.
2. Locate and double click on the **Medtech Services\_Update 1.15.0.18-HF.exe** to launch the installation wizard
3. The '**Welcome to Install Shield Wizard for Medtech Services**' window is displayed.



4. Click the 'Upgrade' button to proceed further.



5. Click the '**Finish**' button to complete the installation.

## Post-Installation Checklist

1	Any errors encountered during the post-installation process have been recorded and provided to Medtech Support for assistance.	<input type="checkbox"/>
2	Login to Medtech Evolution and ensure the database connection is successful.	<input type="checkbox"/>
3	<p>Ensure following utilities/services are started (services.msc):</p> <ul style="list-style-type: none"> <li>○ Medtech Message Transfer Service</li> <li>○ Medtech NIR Transfer Service</li> <li>○ Medtech Shell Service</li> <li>○ Medtech Fax Service</li> <li>○ Medtech Scheduling Service</li> <li>○ Medtech Diagnostic Service</li> </ul> <p>Ensure following services are started IF the practice has <u>Healthone</u> integration:</p> <ul style="list-style-type: none"> <li>○ Medtech: H1PluginService</li> <li>○ Medtech: Evo Api Service (if available – please see Note below)</li> </ul> <p><b>Please Note:</b> The Medtech: Evo Api Service will only be available in specific practices.</p>	<input type="checkbox"/>
4	Ensure that all staff can successfully log into Medtech Evolution without any issues.	<input type="checkbox"/>

For further information, please contact Medtech Support via one of the follow options:

- **Insight:** Register for the Insight Customer Portal at <https://insight.medtechglobal.com/> and Log a Support Ticket
- **Online Chat:** [www.medtechglobal.com](http://www.medtechglobal.com)