

Release Notes Medtech Evolution

ICPC-2 PLUS Update (October 2018)



These release notes contain important information for Medtech users. Please ensure that they are circulated amongst all relevant staff. We suggest that they are filed safely for future reference.

Table of Contents

<u>Introduction</u>	<u>3</u>
<u>Prerequisites</u>	<u>4</u>
<u>Installation</u>	<u>5</u>
<u>New Classification Codes</u>	<u>8</u>
<u>Modified Classification Codes</u>	<u>8</u>
<u>Inactivated Classification Codes and Corresponding Replacement Codes</u>	<u>9</u>
<u>New ICPC Codes in PEN CAT Category</u>	<u>10</u>
<u>Modified ICPC Codes in PEN CAT Category</u>	<u>10</u>

Introduction

These release notes provide an overview on how to apply the **ICPC-2 PLUS Update (October 2018)** for **Medtech Evolution ICPC-2 PLUS** subscribers.

WARNING: It is HIGHLY recommended to employ ONLY qualified system engineers when performing ANY installation and upgrade. The consequences of ruining a database during upgrade could possibly lead to data corruptions and, as a result, data loss and systems downtime.

If in doubt, please consult with your qualified IT technician/service provider or contact one of the Medtech Channel Partners listed on our website:

<http://www.medtechglobal.com/au/support-au/channel-partners-au/>

IMPORTANT NOTE FOR BRIEFCASING

Changes from this update will NOT be applied to the Briefcasing laptops UNTIL a **COMPLETE CHECK-OUT** has been run.

ALL Briefcasing laptops with OUTSTANDING Briefcased data MUST be checked-in PRIOR TO running a complete check-out.

Alternatively, if it is not feasible to run a complete check-out soon, you MUST install this update separately on EACH Briefcasing laptop by following the same instructions in the 'Installation' section below.

Prerequisites

Please review the following prerequisites and ensure they are met prior to running the update:

- Only **CURRENT** ICPC-2 PLUS subscribers can run this update.
NOTE: For subscription enquiries, please contact the Family Medicine Research Centre at the University of Sydney on **02 9351 9408**.
- Ensure the person who will be performing the update has **READ THROUGH** these release notes.
IMPORTANT: This document contains valuable information that, if not read, could seriously affect the update process and/or possible downtime of your network.
- Ensure you are ALWAYS logged onto Windows with **ADMINISTRATIVE RIGHTS** when performing ANY installation, update or maintenance tasks.
- 'User Account Control' (UAC) MUST be **DISABLED** as a policy across ALL Server and Client computers that are running on **Windows Vista** or **Windows 7** or **Windows 2008** or **Windows 2008 R2**.
- To avoid unnecessary problems during installation, upgrade or maintenance, you should ALWAYS log onto Windows in '**Console Mode**'; i.e. not through Remote Desktop Connection, Terminal Services or Citrix.
- Ensure you have a **COMPLETE** backup of ALL databases located in the MedtechAUEvolution\Data directory.
- Ensure ALL users (including remote users) have **LOGGED OUT** of Medtech Evolution.
- Ensure ALL services (e.g. ManageMyHealth™ SMS Communicator), scheduled utilities (e.g. Message Transfer Utility, Auto Scan from Folder) and backup or maintenance tasks (e.g. InterBase Backup Scripts) that require access to the databases are **STOPPED**.
- Ensure the **LAST** database you have logged into **LOCALLY** on the Medtech Evolution Server is the one you would like this update to run on.
NOTE: If unsure, simply login to the CORRECT database from the Medtech Evolution Server, then log out and close Medtech Evolution before continuing.

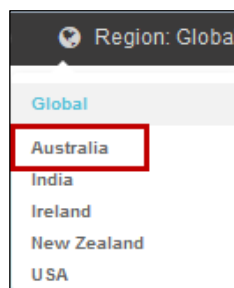
Installation

The **ICPC-2 PLUS Update (October 2018)** must be run on the Medtech Evolution Server machine. The following procedures ONLY need to be run ONCE for EACH practice (or once per database if your practice has multiple databases).

NOTE: If you are uncertain which computer is the Medtech Evolution Server, please contact your IT technician or service provider who performed the Medtech Evolution installation and/or upgrade.

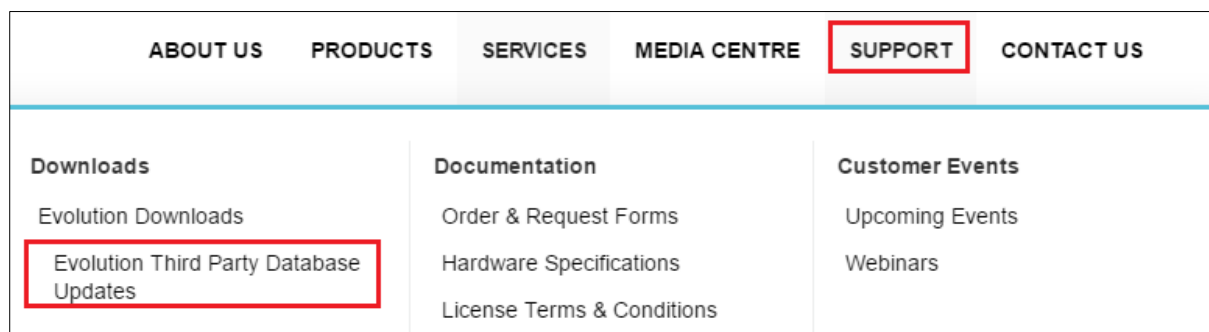
Please visit our website at <http://www.medtechglobal.com/global/>.

Select **Region: Australia** from the region drop down menu in the top right corner of the screen.



The **Australia Home Page** will be displayed.

Select from the top menu, **Support ► Evolution Downloads ► Evolution Third Party Database Updates**. The **Evolution Third Party Database Updates** page will be displayed.



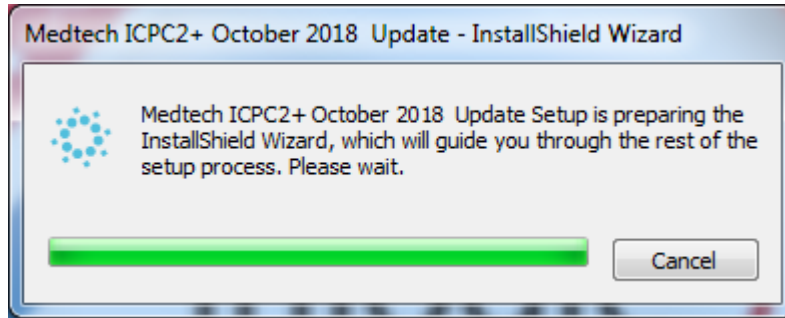
Locate the update called **ICPC-2 PLUS Update (October 2018)** in the list.

Click on the link **ICPC-2 PLUS Update (October 2018)** and download the **ICPC-2 PLUS Update** installer from the **File Attachments** section.

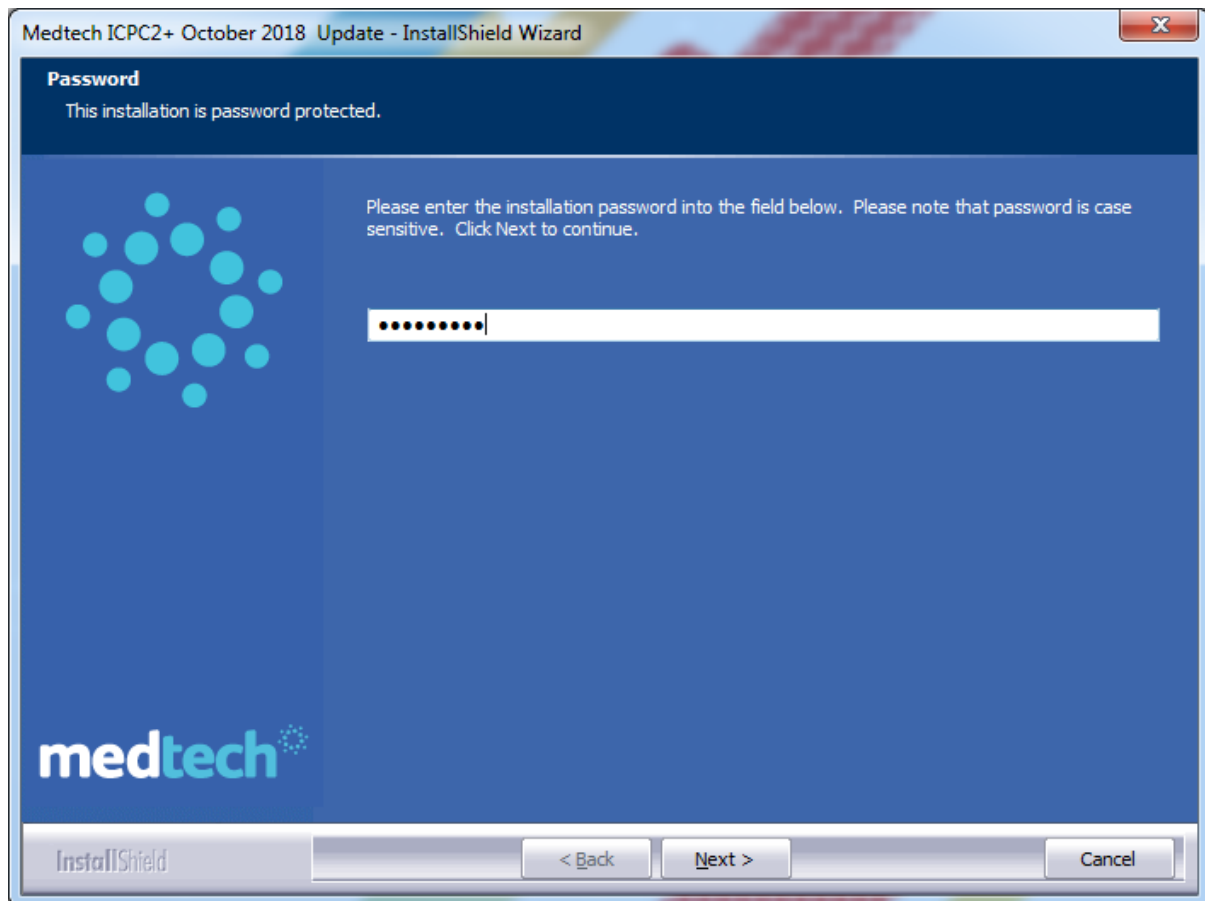
If the **'File Download Security Warning'** dialogue box appears, select the **'Run'** option.

If the **'Open File Security Warning'** dialogue box appears, select the **'Run'** option.

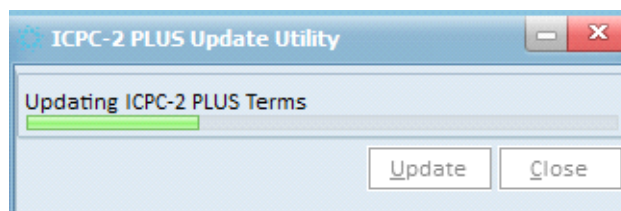
The update will then begin to run.



The 'Password' window will be displayed. Enter the installation password provided by Medtech and click the 'Next' button to continue the update.



The ICPC-2 PLUS Update Utility window and progress bar will be displayed.



Updated ICPC2+ data and reference files will be copied to the Medtech Evolution Server.

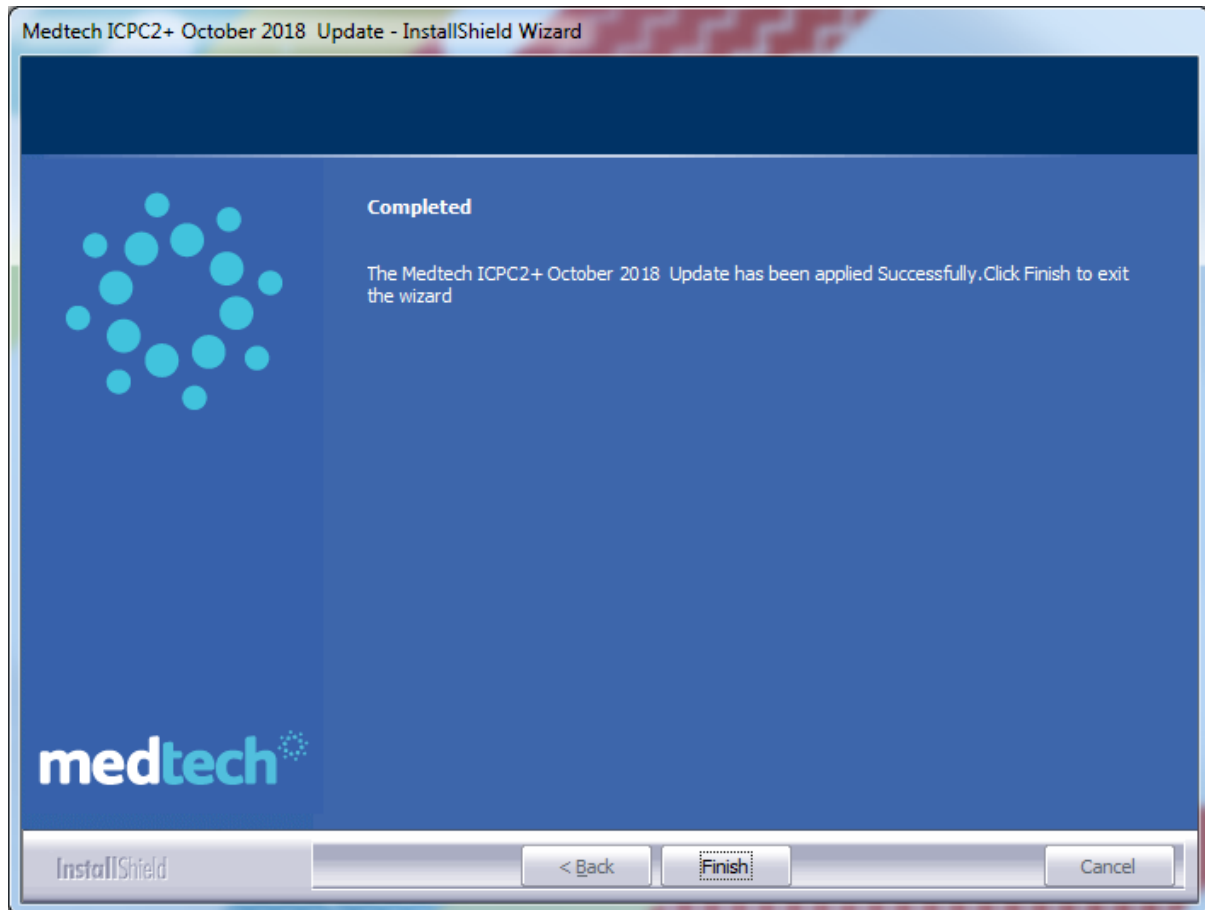
Path for 64-bit Operating System:

C:\ProgramFiles\MedtechAUEvolution\Bin\

Path for 64-bit Operating System:

C:\Program Files (x86)\MedtechAUEvolution\Bin\

Once the update has successfully completed, the **Update Complete** message will be displayed. Click the **'Finish'** button to exit the wizard.



New Classification Codes

The new Classification Codes that are included in this update are listed below:

New ICPC-2 PLUS Code	Term description
A46021	Consult;nurse practitioner
A66021	Referral;nurse practitioner
A77029	Disease;Bornholm
A91046	Imbalance;electrolyte
A99028	Epithelioma
D46003	Consult;dental therapist
D70037	Enteritis;viral
K77029	Retention;fluid (on);lung
K80017	Dysrhythmia;cardiac
K90028	Infarction;cerebellar
K92032	Endarteritis
L71027	Sarcoma;spindle cell
L99106	Ischaemic;contracture
N85013	Malformation;Chiari II
S77014	Carcinoma;Merkel cell
S88017	Rash;allergic
T99096	Familial Mediterranean fever
U08003	Unable (to);urinate
X77010	Neoplasm malig;ovary
X77011	Neoplasm malig;fallopian tube
X80006	Neoplasm benign;ovary
X80007	Neoplasm benign;fallopian tube
X81013	Carcinoma;intraepithel;cervix
X81014	Carcinoma in situ;cervix
X81015	CIN 3
Z03012	Homeless

Modified Classification Codes

Classification codes description modified in this update are listed below:

ICPC-2 PLUS Code	Old description	New description
S74017	Trichophytin	Trichophyton;skin
S96003	Acne;conglobate (cystic)	Acne;conglobata (cystic)
X85005	Atrophy;cervix;F	Atrophy;cervix
A76003	Exanthema;viral	Exanthem;viral
S99010	Granuloma	Granuloma;skin
A81010	Injury;multiple	Injuries;multiple
X21014	Implant(s);breast	Problem;breast implant(s)
A91029	Elevated creatinine kinase	Elevated creatine kinase
K72006	Angioma	Angioma;deep

Inactivated Classification Codes and Corresponding Replacement Codes

The list of Inactivated Classification Codes and their corresponding Replacement code to map are given below.

Inactivated ICPC-2 PLUS Code	Term description	Replacement ICPC-2 PLUS Code	Term description
K99042	Polyp(s);cardiovascular	K72001	Neoplasm benign;cardiovascular
N74008	Carcinoma;meninges	N74006	Neoplasm malig;meninges
N74009	Carcinoma;nerve	N74004	Neoplasm malig;nerve(s)
N74011	Carcinoma;neurological	N74005	Neoplasm malig;neurological
A89004	Prosthetic devices	A89008	Effect(s);prosthetic device
K90015	Seizure;apoplectic	K90017	Stroke
X17003	Compression;pelvic;F	X17004	Sympt/complaint;pelvis;F
A88009	Over-exposure	A88026	Adverse effect;exposure
K70010	Pericarditis;nonrheumatic	K70003	Pericarditis;acute
T90018	Diabetes;complicated	T90002	Diabetes mellitus
A99003	Lesion;internal	A99001	Disease
S24009	Itching;hair	S02003	Itching;scalp
R05002	Cough;smokers;febrile	R05007	Cough;smokers
S11021	Infection;track site	S11010	Infection;skin;post traumatic
T99062	Early development;physical	T99051	Puberty;precocious
S82004	Naevus;functional	S82018	Naevus
A70007	Tuberculosis;other	A70012	Tuberculosis
N99039	Palsy;non facial	N18010	Palsy
N29027	Abnormal;nerve	N29025	Problem;neurological
T99009	Disorder;fluids	T29024	Problem;endoc/metabol
R99030	Oedema;without CVD	K07012	Oedema;generalised
N89014	Migraine;cervicogenic	L83030	Headache;cervicogenic
A79014	Epithelioma	A99028	Epithelioma
U05003	Unable (to);urinate	U08003	Unable (to);urinate
X75003	Carcinoma;intraepithel;cervix	X81013	Carcinoma;intraepithel;cervix
X75014	Carcinoma in situ;cervix	X81014	Carcinoma in situ;cervix
X75016	CIN 3	X81015	CIN 3
X80002	Neoplasm benign;ovaries/tube	X80006	Neoplasm benign;ovary
X77002	Neoplasm malig;ovaries/tubes	X77010	Neoplasm malig;ovary
S98006	Rash;allergic	S88017	Rash;allergic
T99067	Imbalance;electrolyte	A91046	Imbalance;electrolyte
L70001	Disease;Bornholms	A77029	Disease;Bornholm
K84019	Dysrhythmia;cardiac	K80017	Dysrhythmia;cardiac
D94008	Enteritis;viral	D70037	Enteritis;viral

K92005	Ischaemia;contracture	L99106	Ischaemic;contracture
R29004	Retention;fluid (on);lung	K77029	Retention;fluid (on);lung

New ICPC Codes in PEN CAT Category

The list of ICPC Codes included in the PEN CAT category for this update:

NIL

Modified ICPC Codes in PEN CAT Category

The list of ICPC Codes modified in the PEN CAT category for this update:

NIL

Should you require any assistance, or for any other queries regarding this release, please contact Medtech Support via:

- Medtech Evolution application [**Help ► Contact Support**]
- Email: supportau@medtechglobal.com
- Phone: **1800 148 165**
- Fax: 03 9690 8010 - Attn: Medtech Support