

Medtech Evolution Immunisation Schedule

(July 2018)



These Instructions contain important information for all Medtech Evolution users. We suggest that these notes are filed safely for future reference

Contents

Introduction.....4

Pre-requisites.....4

Add a new Vaccine Code.....5

Add a new Vaccine Age Group7

Add & Map a New Vaccine Product9

Immunisation Schedule Utility..... 12

 Add a New Schedule Path 13

Appendix A..... 17

 Standard Vaccines 17

 Non-Standard Vaccines 18

 Sub-Population Vaccines**Error! Bookmark not defined.**

 Queensland Providers Only..... 19

 Equivalent and Partial Equivalent Vaccines20

Copyright

This publication is copyright to Medtech Limited. Other than for the purposes of and subject to the conditions prescribed under the Copyright Act, no part of this publication may be in any form or by any means (electronic, mechanical, micro copying, photocopying, recording or otherwise) be reproduced, stored in a retrieval system, or transmitted without prior written permission.

Inquiries should be addressed directly to:

Medtech Global Limited
Medtech House, Level 2
99 Coventry Street
Southbank, Victoria 3006
Australia

Disclaimer

Every effort has been made by Medtech to provide accurate information in this publication. Medtech and the authors and editors assume no responsibility for any direct, indirect, incidental, consequential, special or exemplary damages resulting from the use of this publication.



INTRODUCTION

The **Medtech Evolution Immunisation Schedule Guide** has been written to provide assistance to your Clinical staff in the creation of new vaccines, how to edit existing vaccines, and how to add new vaccines to the Medtech Evolution **Vaccine Product Mapping** screen.

Setup and configuration instructions on the use of the **Immunisation Schedule Utility** have been broken down into separate sections so that you may select and use those that are relevant to your needs. These are covered below and describe how to:

- Add new Vaccine
- Add new Vaccine Groups
- Add new Age Range groups
- Add new Immunisation Path (as per your State and Practice requirements)


PRE-REQUISITES

Please ensure that the person who will be altering or creating new Pathways or Vaccines in your Medtech Evolution system has read and fully understands the process as described in this instruction guide.

The requirements for the successful management of your Immunisation Schedule have been listed below, and must be applied prior to adding any new vaccines and pathways:

- Ensure that the staff member updating the Immunisation Schedule has the correct Medtech Evolution **Administration** and **Clinical Rights** access
- Ensure that you have run the latest Medtech Evolution **Vaccine Product Mapping Utility** (February 2018) from our website www.medtechglobal.com on all your Medtech Evolution databases.

ADD A NEW VACCINE CODE

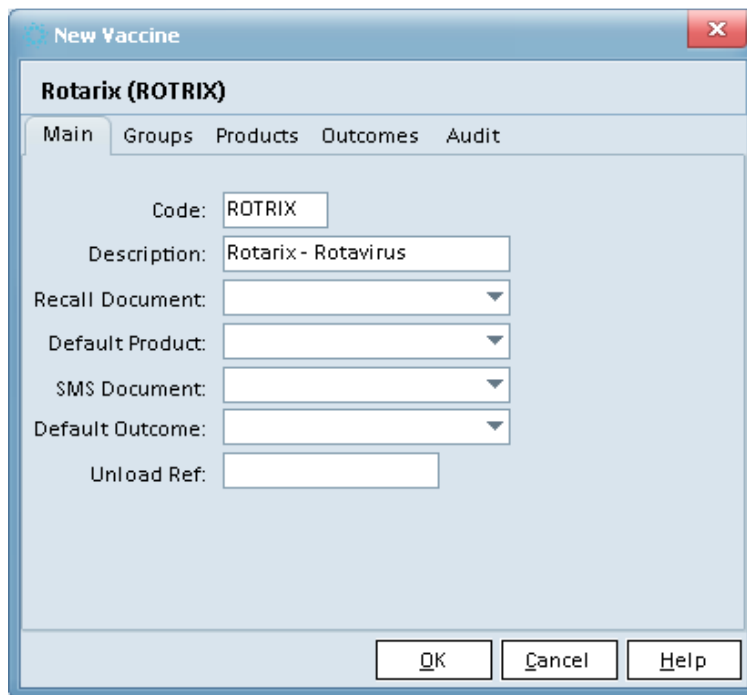
1. Go to the menu option **Setup → Recall/Screening → Vaccine**.
2. To add the new **Vaccine**, Click on the first icon  at the top of the screen to 'Add' the new vaccine.



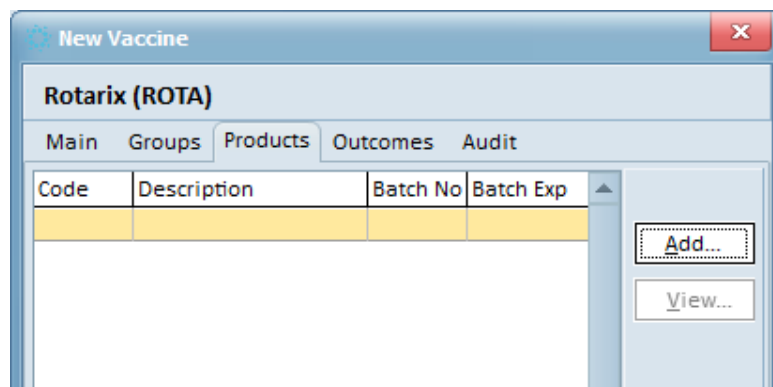
This will open a new screen for you to add the Code and Description of the Vaccine. Example in the screenshot below if for the vaccine **Rotarix**

Important Note

Ensure that the **Code** used is of the correct standards as per **Appendix A** of this document.



3. After adding the **Code** and **Description**, click on the **Products** tab of the screen.



Then click on the **Add** button to the right to **Add** the **Product** details in here.

Enter in the relevant information:

PRODUCT CODE: <Refer to the correct Product Code Table in **Appendix A**>

PRODUCT DESCRIPTION: <Refer to the correct Product Description in **Appendix A**>

Add Batch No: (use your existing batch details)

Batch Expiry: (use your existing expiry date details)

- The **Outcome** tab will be filled in automatically with default outcome responses.

Outcome	Description	Recall In
G	Given	
N	Not Given	
R	Refused	

- Click on the **Add** button  to add new **Outcomes** if required.

- Click on the **Ok** button to save the **Product Code** entry

ADD A NEW VACCINE AGE GROUP

1. To include a new **Age Range** for a Vaccine Group to appear in the Immunisation Schedule screen – go to the **Setup → Recall/Screening → Vaccine Group** menu option.

The **Vaccine Group** screen will appear as shown below.

Code	Description	Next Group	Next In
BIR	Birth	2M	2 months
2M	2 months	4M	2 months
4M	4 months	6M	2 months
6M	6 months	12M	6 months
12M	12 months	18M	6 months
18M	18 months	4Y	30 months
4Y	4 years		

2. To add a new Code, click on the new icon to open up the relevant screen.

New Vaccine Group

Descr (CODE)

Main | Audit

Code:

Description:

Usually Given At:

Late After:

Next Vaccine Group:

Next Vaccine In:

Recall Document:

SMS Document:

Sequence:

OK | Cancel | Help

- Enter in the unique **Code**, a meaningful **Description** and **Sequence** in to the relevant fields as shown in the screenshot sample below.

NOTE

The **Sequence** for the **Vaccine Group** should be greater than **0**. If the **Sequence** is **0**, then the Vaccine Group will not display in the **Immunisation Schedule Utility**.

- Click on the **Ok** button to save the new **Code** entry. Below is a sample screenshot of various new **Codes** and **Descriptions** created, to accommodate an advanced **Age Range** selection.

Code	Description	Next Group	Next In
10Y	Year 10 - 11		
65Y	65 Years above		
70Y	70 Years		
7Y	7 Years		
BIR	Birth	2M	2 months
2M	2 months	4M	2 months
4M	4 months	6M	2 months
6M	6 months	12M	6 months
12M	12 months	18M	6 months
18M	18 months	4Y	30 months
4Y	4 years		

ADD & MAP A NEW VACCINE PRODUCT

Important Note:

Before you can correctly configure your new Vaccines in to your **Vaccine Product Mapping** screen, you must first have ensured that the latest **Vaccine Product Mapping Utility** has been successfully run on your **Medtech Evolution** database.

This utility can be downloaded from our Medtech website www.medtechglobal.com

1. Select the **Setup → Recall/Screening → Vaccine Product Mapping** menu option. The following screen will be displayed.

Medicare Aust. Vaccine	Medtech Vaccine	Medtech Code	Medtech Vaccine Product
Adacel (ADCL)	Test Vaccine (TEST)	TEST	Test Product
Adacel Polio (ADPD)	Test Vaccine (TEST)	TEST	Test Product
ADT Booster (ADT)	Adult Diphtheria Tetanus (ADT)	ADT	ADT
Afluria Quad (AFLR)	Test Vaccine (TEST)	TEST	Test Product
Agrippal (AGRPAL)	Test Vaccine (TEST)	TEST	Test Product
Avaxim (AVAXM)	Avaxim (AVAXM)	AVAXM	Avaxim
BCG - tuberculosis (BCG)	Tuberculosis (TUB)	BCG	BCG Vaccine
Bexsero (BEXO)	Test Vaccine (TEST)	TEST	Test Product
Boostrix-IPV (BDIPV)	Test Vaccine (TEST)	TEST	Test Product
Boostrix (BDDST)	Test Vaccine (TEST)	TEST	Test Product

2. The **Vaccine Product Mapping** screen consists of four columns
 - **Medicare Aust. Vaccine**
 - This is the Medicare accepted code that will be sent electronically to ACIR
 - **Medtech Vaccine**
 - This is from your Vaccine that you created in Medtech (also shows the associated code used)
 - **Medtech Code**
 - This is the Code that you created for entering your Vaccine details
 - **Medtech Vaccine Product**
 - This contains the details of the Product names that make up your vaccine (populated from the Vaccines Product tab)
3. Using the first column as your guide – **Medicare Aust. Vaccine** – Scroll down the list until you view the vaccine '**Rotarix**' that we created at the start of the document.

NOTE

The Medicare Vaccine codes were added to your Medtech Evolution database via the Vaccine Product Mapping utility

Medicare Aust. Vaccine	Medtech Vaccine	Medtech Code	Medtech Vaccine Product
Priorix-Tetra (PRXTET)	= Test Vaccine (TEST)	TEST	Test Product
Quadacel (QDCL)	= Quadacel (QDCL)	QDCL	Quadacel
Q fever vaccine (QFEVER)	= Q fever vaccine (QFEVER)	QFEVER	Q fever vaccine
Rabies IMOG 10ml (RIGTEN)	= Rabies IMOG 10ml (RIGTEN)	RIGTEN	Rabies 10ml
Rabies IMOG 2ml (RIGTWO)	= Rabies IMOG 2ml (RIGTWO)	RIGTWO	Rabies IMOG 2ml
Rotarix (ROTRIX)	= Test Vaccine (TEST)	TEST	Test Product
RotaTeq (ROTTEQ)	= RotaTeq (RTQ)	ROTTEQ	Rota Teq - Rotavirus
Stamaril (STAMRL)	= Test Vaccine (TEST)	TEST	Test Product
Synflorix (SYNFLX)	= Test Vaccine (TEST)	TEST	Test Product
Tripacel (TCL)	= Tripacel (TCL)	TCL	Tripacel

- The Medtech Vaccine, Medtech Code and Medtech Vaccine Product columns are set to the default of **Test Vaccine (Test)** as a place holder for you to correctly map your Vaccine to the correct Medicare codes.

To change this, click on Medtech Vaccine column to alter the code from **Test Vaccine (TEST)** by using the drop down menu to select your new Vaccine code 'ROTRIX'.

Medicare Aust. Vaccine	Medtech Vaccine	Medtech Code	Medtech Vaccine Product
Q fever vaccine (QFEVER)	= Q fever vaccine (QFEVER)	QFEVER	Q fever vaccine
Rabies IMOG 10ml (RIGTEN)	= Rabies IMOG 10ml (RIGTEN)	RIGTEN	Rabies 10ml
Rabies IMOG 2ml (RIGTWO)	= Rabies IMOG 2ml (RIGTWO)	RIGTWO	Rabies IMOG 2ml
Rotarix (ROTRIX)	= Test Vaccine (TEST)	TEST	Test Product
RotaTeq (ROTTEQ)	= Rabies vaccine (HDCV)	ROTTEQ	Rota Teq - Rotavirus
Stamaril (STAMRL)	= Rhesus (RHE)	TEST	Test Product
Synflorix (SYNFLX)	= RotaTeq (RTQ)	TEST	Test Product
Tripacel (TCL)	= Rotarix (ROTA)	TCL	Tripacel
Td (TDT)	= Rotarix - Rotavirus (ROTRI)	TEST	Test Product
Tet-Tox (TETTOX)	= Rubella (RUB)	TEST	Test Product
	= Test Vaccine (TEST)	TEST	Test Product
	= Tetanus (TET)	TEST	Test Product
	= Test vaccine (TEST)	TEST	Test Product

- Once the **Medtech Vaccine** code has been selected repeat the process in the next column

Medicare Aust. Vaccine	Medtech Vaccine	Medtech Code	Medtech Vaccine Product
Q fever vaccine (QFEVER)	= Q fever vaccine (QFEVER)	QFEVER	Q fever vaccine
Rabies IMOG 10ml (RIGTEN)	= Rabies IMOG 10ml (RIGTEN)	RIGTEN	Rabies 10ml
Rabies IMOG 2ml (RIGTWO)	= Rabies IMOG 2ml (RIGTWO)	RIGTWO	Rabies IMOG 2ml
Rotarix (ROTRIX)	= Rotarix - Rotavirus (ROTRIX)		Test Product
RotaTeq (ROTTEQ)	= RotaTeq (RTQ)	ROTRIX	Rota Teq - Rotavirus
Stamaril (STAMRL)	= Test Vaccine (TEST)	TEST	Test Product

- The end result will be the updated **Vaccine Product Mapping** screen as shown in the screenshot sample below

Medicare Aust. Vaccine	Medtech Vaccine	Medtech Code	Medtech Vaccine Product
Q fever vaccine (QFEVER)	Q fever vaccine (QFEVER)	QFEVER	Q fever vaccine
Rabies IMOG 10ml (RIGTEN)	Rabies IMOG 10ml (RIGTEN)	RIGTEN	Rabies 10ml
Rabies IMOG 2ml (RIGTWO)	Rabies IMOG 2ml (RIGTWO)	RIGTWO	Rabies IMOG 2ml
Rotarix (ROTRIX)	Rotarix - Rotavirus (ROTRIX)	ROTRIX	Rotarix - Rotavirus
RotaTeq (ROTTEQ)	RotaTeq (RTQ)	ROTTEQ	Rota Teq - Rotavirus
Stamiril (STAMRL)	Test Vaccine (TEST)	TEST	Test Product
Synflorix (SYNFLX)	Test Vaccine (TEST)	TEST	Test Product
Tripacel (TCL)	Tripacel (TCL)	TCL	Tripacel
Td (TDT)	Test Vaccine (TEST)	TEST	Test Product
Tet-Tox (TETTOX)	Test Vaccine (TEST)	TEST	Test Product

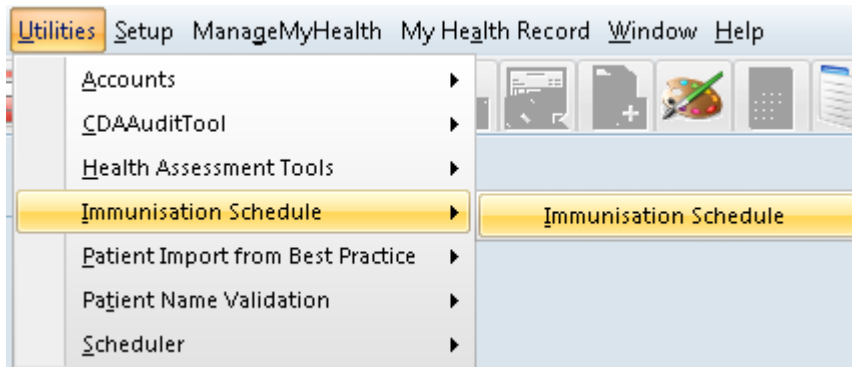
- Click on the **Ok** button to save the changes.

IMMUNISATION SCHEDULE UTILITY

IMPORTANT NOTE

Only those vaccines entered in your Vaccine Product Mapping list will be displayed as a valid option in the Immunisation Schedule Utility

1. Select the **Utility → Immunisation Schedule → Immunisation Schedule** menu to open up the **Immunisation Schedule**.



2. The Immunisation Schedule screen will open with the existing Pathways shown, as per the screenshot sample below,

The screenshot shows the 'Immunisation Schedule' window with a toolbar containing 'Add Schedule', 'Edit', 'Details', and 'Print'. Below the toolbar is a table with the following data:

Schedule Code	Schedule Description	Valid From
1	Path 1 (until 30/04/00)	01/01/1800
2	Path 2 (01/05/00 to 31/12/03)	01/05/2000
3	Path 3 (01/01/04 - 31/12/04)	01/01/2004
4	Path 4 (01/01/05 - 31/10/05)	01/01/2005
5	Path 5 (from 01/11/05)	01/11/2005
6	Path 6 - South Australia 2010	01/01/2011
7	Path 7 - Victoria 2010	01/01/2011
8	Path 8 - WA 2010	01/01/2011
9	Path 9 - NSW 2010	01/01/2011
A	Path 10 - QLD 2010	01/01/2011
B	Test Schedule	29/08/2017
D	Test Schedule 3	03/07/2018
E	Test Schedule with VAXGRP	03/07/2018
C	Test Schedule 2	02/07/2018

NOTE

The Schedules shown in the screenshot above may differ greatly (or only slightly) from the Immunisations Schedule screen in your Practice and is for demonstration purposes only.

Add a New Schedule Path

1. From the **Immunisation Schedule** screen, click on the **Add Schedule** button to create your new **Immunisation Schedule** Pathway.



2. The **Add Schedule** button will open up the following screen to allow you to create your new entry

Enter in the **Description**, **Start Date**, **Schedule Starts from**, **From Age** and **To Age** in to the relevant fields. Click on the **Ok** button to save the new entry.

3. Once you have clicked on the **Ok** button, the next screen that appears is the actual Immunisation Schedule configuration process screen.
4. This screen will allow you to define the Vaccines for each Age Range, and is broken in to three sections:

- This first section – contains details of the name and description of the Path, along with valid Schedule Start Date, Schedule Starts From and From & To Age of the schedule entry


- The second section (left hand side of the screen) – contains the **Age Range** from the **Group** drop down and the available **Vaccines** that may be selected/ticked for inclusion of the various **Group** Vaccines


- The Third section (right hand side of the screen) – contains the list of specified **Vaccines** for each **Group** as selected from the drop down list

Group	Vaccine	Sequence

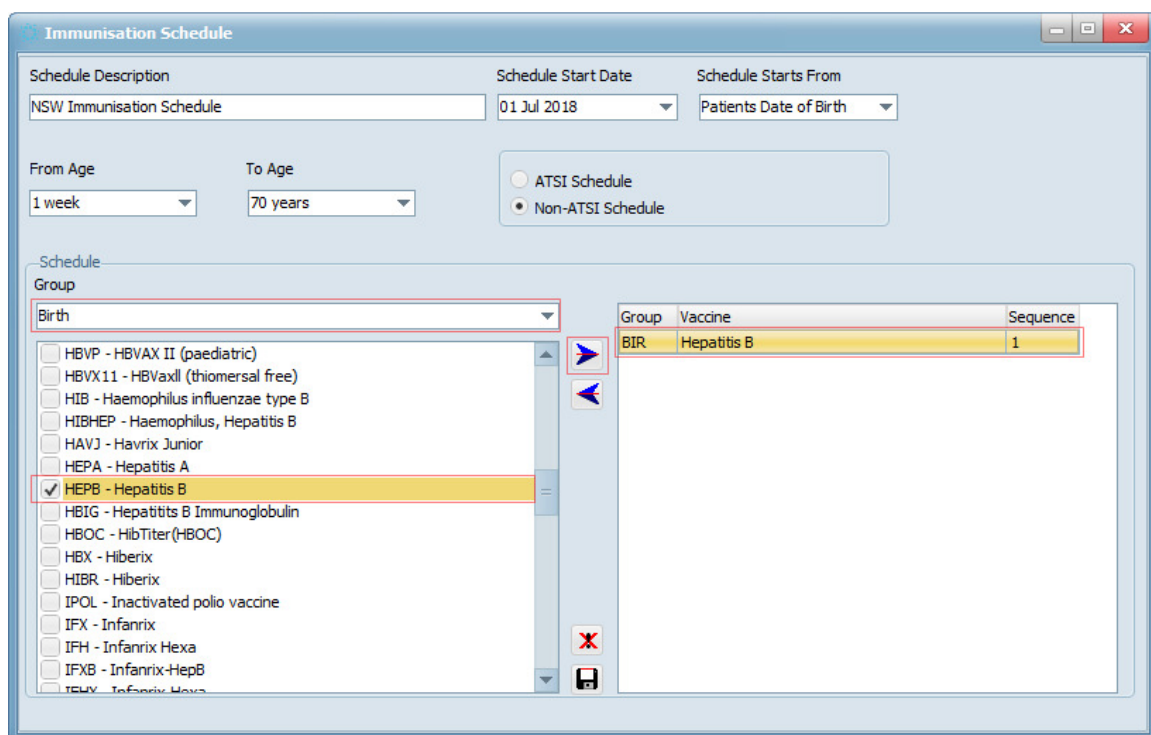
NOTE

You need to alter the Group each time to add/exclude vaccines to the list to the right

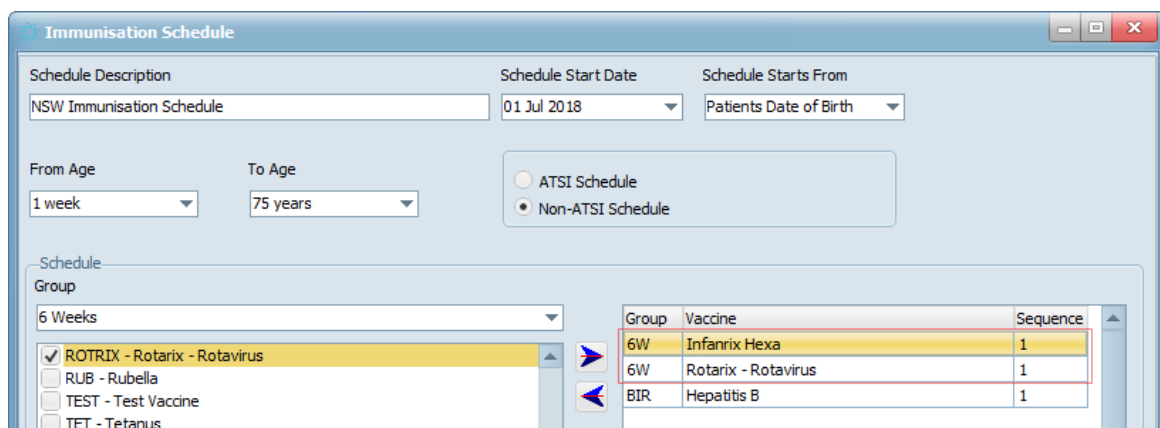
Then use the right arrow icon  to move the selected **Vaccine** to appear on the right hand side of the screen

If a Vaccine selection has been made in error, use the left arrow icon  to remove it from the right hand side of the screen.

From the example below, we have selected **BIRTH** from the drop down list, and have then selected/ticked the **Hepatitis B** vaccine directly from the vaccine list.



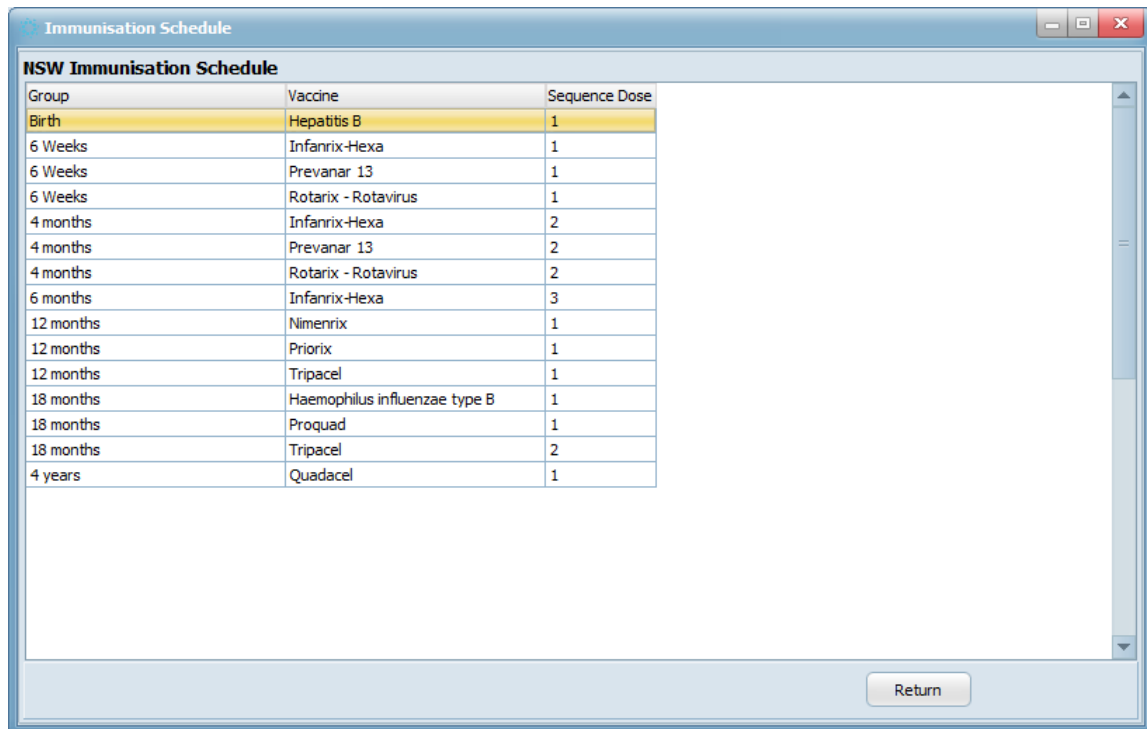
5. Select the next **Group** is **6 Week** and added the corresponding **Vaccines** to the group. In the screenshot below, we have added the Infranix Hexa, Prevenar 13, Rotarix to the schedule for **6 weeks**.



- Continue to work through the **Group** (Age Range), and add the required vaccines to the right hand side of the screen.

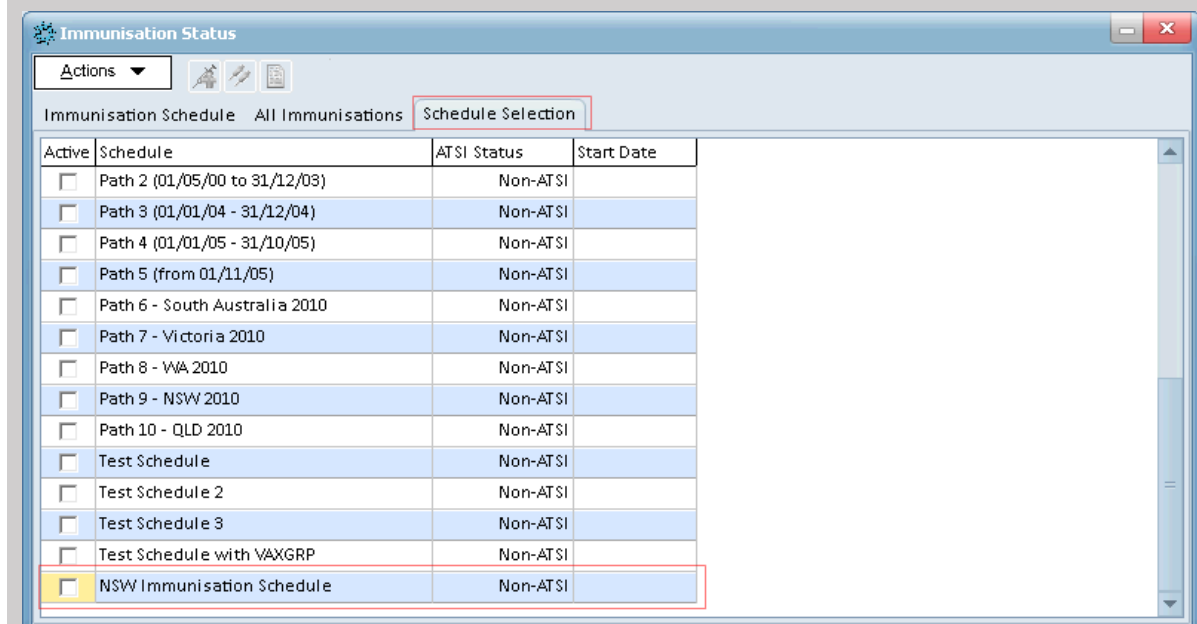
Click the  icon to save the added vaccine details for the Immunisation Schedule.

The end result (continuing from the NSW example) will result in the final screen showing the new entries as shown in the sample screenshot below



Group	Vaccine	Sequence Dose
Birth	Hepatitis B	1
6 Weeks	Infanrix-Hexa	1
6 Weeks	Prevanar 13	1
6 Weeks	Rotarix - Rotavirus	1
4 months	Infanrix-Hexa	2
4 months	Prevanar 13	2
4 months	Rotarix - Rotavirus	2
6 months	Infanrix-Hexa	3
12 months	Nimenrix	1
12 months	Priorix	1
12 months	Tripacel	1
18 months	Haemophilus influenzae type B	1
18 months	Proquad	1
18 months	Tripacel	2
4 years	Quadacel	1

After creating an **Immunisation Schedule** in **Immunisation Schedule Utility**, the created schedule will display in the **Module → Immunisations → Immunisation Status screen → Schedule Selection** tab.



Active	Schedule	ATSI Status	Start Date
<input type="checkbox"/>	Path 2 (01/05/00 to 31/12/03)	Non-ATSI	
<input type="checkbox"/>	Path 3 (01/01/04 - 31/12/04)	Non-ATSI	
<input type="checkbox"/>	Path 4 (01/01/05 - 31/10/05)	Non-ATSI	
<input type="checkbox"/>	Path 5 (from 01/11/05)	Non-ATSI	
<input type="checkbox"/>	Path 6 - South Australia 2010	Non-ATSI	
<input type="checkbox"/>	Path 7 - Victoria 2010	Non-ATSI	
<input type="checkbox"/>	Path 8 - WA 2010	Non-ATSI	
<input type="checkbox"/>	Path 9 - NSW 2010	Non-ATSI	
<input type="checkbox"/>	Path 10 - QLD 2010	Non-ATSI	
<input type="checkbox"/>	Test Schedule	Non-ATSI	
<input type="checkbox"/>	Test Schedule 2	Non-ATSI	
<input type="checkbox"/>	Test Schedule 3	Non-ATSI	
<input type="checkbox"/>	Test Schedule with VAXGRP	Non-ATSI	
<input checked="" type="checkbox"/>	NSW Immunisation Schedule	Non-ATSI	

APPENDIX A

Standard Vaccines

Vaccine/Brand Name	Vaccine Code	Max doses
ActHIB	PRPT	NR
Adacel	ADCL	NR
Adacel Polio	ADPO	NR
ADT Booster	ADT	NR
Boostrix	BOOST	NR
Boostrix-IPV	BOIPV	NR
CDT - combined diphtheria, tetanus	CDT	NR
Comvax	CMX	NR
Engerix B (adult)	ENGBA	NR
Engerix B (paediatric)	ENGP	NR
Generic Diphtheria	GNDIP	NR
Generic DTPa	DTPA	NR
Generic HBV	HBV	NR
Generic Hepatitis B	GNHEP	NR
Generic Hib	GNHIB	NR
Generic Measles	GNMEA	NR
Generic Meningococcal C	GNMEN	NR
Generic MMR	MMR	NR
Generic Mumps	GNMUM	NR
Generic (Monovalent) Pertussis	P	NR
Generic Pneumococcal	GNPNE	NR
Generic Poliomyelitis	GNPOL	NR
Generic Rotavirus	GNROX	NR
Generic Rubella	GNRUB	NR
Generic Tetanus	GNTET	NR
Generic Varicella-Zoster	GNVAR	NR
H-B-Vax II (adult)	HBVXA	NR
H-B-VAX II (paediatric)	HBVP	NR
Hexaxim	HEXAXM	NR
Hiberix	HBX	NR
HibTITER	HBOC	NR
Infanrix	IFX	NR
Infanrix-HepB	IFXB	NR
Infanrix Hexa	IFHX	NR
Infanrix-IPV	IFIP	NR
Infanrix Penta	IFPA	NR
IPOL - inactivated polio vaccine	IPV	NR
Menactra	MENACT	NR
Meningitec	MENTEC	NR
Menitorix	MNTRX	NR
Menjugate	MENJUG	NR
Menveo	MENVO	NR
MMR II	MMRCSL	NR
NeisVac-C	NEISVC	NR

Vaccine/Brand Name	Vaccine Code	Max doses
Oral Polio (Polio Sabin)	OPV	NR
Pediacel	PDCL	NR
PedvaxHIB	PRPOMP	NR
Pneumovax 23	PNEUMO	NR
Poliacel	PLCL	NR
Prevenar 7	PRVNR	NR
Prevenar 13	PRVTH	NR
Priorix	MMRSKB	NR
Priorix-Tetra	PRXTET	NR
ProHIBit	PRPD	NR
ProQuad	PROQAD	NR
Quadracel	QDCL	NR
Rotarix	ROTRIX	NR
RotaTeq	ROTTEQ	NR
Synflorix	SYNFLX	NR
Td	TDT	NR
Tet-Tox	TETTOX	NR
Tripacel	TCL	NR
Triple Antigen	DTP	NR
Varilrix	VLRIX	NR
Varivax	VRVAX	NR
Zostavax	ZOTVAX	NR

Non-Standard Vaccines

Vaccine/Brand Name	Vaccine Code	Max doses
Afluria Quad	AFLR	NR
Agrippal	AGRPAL	NR
Avaxim	AVAXM	NR
BCG – tuberculosis	BCG	1
Bexsero	BEXO	NR
Bi Meningo	MENGO	NR
Cervarix	HPVCX	NR
Dukoral	DKRAL	NR
Fluad	FLUAD	NR
Fluarix	FLRIX	NR
Fluarix Tetra	FLUTET	NR
FluQuadri	FQUAD	NR
FluQuadri Junior	FQDJN	NR
bioCSL Fluvax	FLUVAX	NR
Fluvax Junior	FVXJNR	NR
Fluvirin	FLVRN	NR
Fluzone High-Dose	FLUHID	NR
Gardasil	HPV	NR
Gardasil 9	HPVNIN	NR
Generic Hepatitis A	GNHPA	NR
Generic HPV	GNHPV	NR

Vaccine/Brand Name	Vaccine Code	Max doses
Generic Influenza	GNFLU	NR
Generic Japanese Encephalitis	GNJEN	NR
Generic Meningococcal B	GNMNB	NR
Generic Yellow Fever	GNYFEV	NR
Havrix	HAVAD	NR
Havrix Junior	HAVJ	NR
Imojev	IMOJEV	NR
Influvac	INFLUV	NR
Influvac Tetra	INFLTA	NR
Jespect	JESPCT	NR
JE-VAX	JEVAX	NR
Mencevax ACWY	MENVAX	NR
Menomune	MENUME	NR
Merieux	HDCV	NR
Nimenrix	NIMRIX	NR
Panvax	PANVAX	NR
Rabipur	PCECV	NR
Stamaril	STAMRL	NR
Twinrix	HATWAD	NR
Twinrix Junior	HATWNJ	NR
Typherix	TYPHRX	NR
Typhim Vi	TYPHVI	NR
Vaqta Adult	VAQAD	NR
Vaqta Paediatric/Adolescent formulation	HAVAQ	NR
Vaxigrip	VAXGRP	NR
Vaxigrip Junior	VGRJNR	NR
Vivaxim	VIVAXM	NR
Vivotif Oral	VIVOTF	NR

Note: bioCSL Fluvax should not be administered to children under five years of age.

Queensland Providers Only

Vaccine/Brand Name	Vaccine Code	Max doses
HBVaxII (thiomersal free)	HBVXII	3
Hepatitis B Immunoglobulin	HBIG	1
Q fever vaccine	QFEVER	1
Rabies IMOG 10ml	RIGTEN	3
Rabies IMOG 2ml	RIGTWO	9

Note: Where the max dose field displays 'NR', this means that there is no restriction on the maximum allowable doses that can be transmitted.

Equivalent and Partial Equivalent Vaccines

The following table details equivalent and partial equivalent vaccines. If an encounter contains equivalent vaccines, the encounter will be rejected.

Vaccine Code	Equivalents
ADCL	ADCL, ADPO, ADT, BOOST, BOIPV, CDT, DTP, DTPA, GNDIP, GNTET, HEXAXM, IFHX, IFIP, IFPA, IFX, IFXB, P, PDCL, PLCL, QDCL, TCL, TDT, TETTOX
ADPO	ADCL, ADPO, ADT, BOOST, BOIPV, CDT, DTP, DTPA, GNDIP, GNPOL, GNTET, HEXAXM, IFHX, IFIP, IFPA, IFX, IFXB, IPV, OPV, P, PDCL, PLCL, QDCL, TCL, TDT, TETTOX
ADT	ADCL, ADPO, ADT, BOOST, BOIPV, CDT, DTP, DTPA, GNDIP, GNTET, HEXAXM, IFHX, IFIP, IFPA, IFX, IFXB, PDCL, PLCL, QDCL, TCL, TDT, TETTOX
AFLR	AFLR, AGRPAL, FLRIX, FLUTET, FLUVAX, FLVRN, FQDJN, FQUAD, FVXJNR, GNFLU, INFLUV, PANVAX, VAXGRP, VGRJNR
AGRPAL	AFLR, AGRPAL, FLRIX, FLUTET, FLUVAX, FLVRN, FQDJN, FQUAD, FVXJNR, GNFLU, INFLUV, PANVAX, VAXGRP, VGRJNR
AVAXM	AVAXM, GNHPA, HATWAD, HATWNJ, HAVAD, HAVAQ, HAVJ, VAQAD, VIVAXM
BCG	BCG
BEXO	BEXO, GNMNB
BOOST	ADCL, ADPO, ADT, BOOST, BOIPV, CDT, DTP, DTPA, GNDIP, GNTET, HEXAXM, IFHX, IFIP, IFPA, IFX, IFXB, P, PDCL, PLCL, QDCL, TCL, TDT, TETTOX
BOIPV	ADCL, ADPO, ADT, BOOST, BOIPV, CDT, DTP, DTPA, GNDIP, GNPOL, GNTET, HEXAXM, IFHX, IFIP, IFPA, IFX, IFXB, IPV, OPV, P, PDCL, PLCL, QDCL, TCL, TDT, TETTOX
CDT	ADCL, ADPO, ADT, BOOST, BOIPV, CDT, DTP, DTPA, GNDIP, GNTET, HEXAXM, IFHX, IFIP, IFPA, IFX, IFXB, PDCL, PLCL, QDCL, TCL, TDT, TETTOX
CMX	CMX, ENGP, GNHEP, GNHIB, HBOC, HBV, HBVP, HBX, HEXAXM, IFHX, IFPA, IFXB, MNTRX, PDCL, PLCL, PRPD, PRPOMP, PRPT
DKRAL	DKRAL
DTP	ADCL, ADPO, ADT, BOOST, BOIPV, CDT, DTP, DTPA, GNDIP, GNTET, HEXAXM, IFHX, IFIP, IFPA, IFX, IFXB, P, PDCL, PLCL, QDCL, TCL, TDT, TETTOX

Vaccine Code	Equivalents
DTPA	ADCL, ADPO, ADT, BOOST, BOIPV, CDT, DTP, DTPA, GNDIP, GNTET, HEXAXM, IFHX, IFIP, IFPA, IFX, IFXB, P, PDCL, PLCL, QDCL, TCL, TDT, TETTOX
ENGBA	CMX, ENGBA, ENGP, GNHEP, HBV, HBVP, HEXAXM, IFHX, IFPA, IFXB
ENGP	CMX, ENGBA, ENGP, GNHEP, HBV, HBVP, HEXAXM, IFHX, IFPA, IFXB
FLRIX	AFLR, AGRPAL, FLRIX, FLUAD, FLUHID, FLUTET, FLUVAX, FLVRN, FQDJN, FQUAD, FVXJNR, GNFLU, INFLUV, INFLTA, PANVAX, VAXGRP, VGRJNR
FLUAD	AFLR, AGRPAL, FLRIX, FLUAD, FLUHID, FLUTET, FLUVAX, FLVRN, FQDJN, FQUAD, FVXJNR, GNFLU, INFLTA INFLUV, PANVAX, VAXGRP, VGRJNR
FLUHID	AFLR, AGRPAL, FLRIX, FLUAD, FLUHID, FLUTET, FLUVAX, FLVRN, FQDJN, FQUAD, FVXJNR, GNFLU, INFLTA INFLUV, PANVAX, VAXGRP, VGRJNR
FLUTET	AFLR, AGRPAL, FLRIX, FLUAD, FLUHID FLUTET, FLUVAX, FLVRN, FQDJN, FQUAD, FVXJNR, GNFLU, INFLTA, INFLUV, PANVAX, VAXGRP, VGRJNR
FLUVAX	AFLR, AGRPAL, FLRIX, FLUAD, FLUHID, FLUTET, FLUVAX, FLVRN, FQDJN, FQUAD, FVXJNR, GNFLU, INFLTA, INFLUV, PANVAX, VAXGRP, VGRJNR
FVXJNR	AFLR, AGRPAL, FLRIX, FLUAD, FLUHID, FLUTET, FLUVAX, FLVRN, FQDJN, FQUAD, FVXJNR, GNFLU, INFLTA, INFLUV, PANVAX, VAXGRP, VGRJNR
FQDJN	AFLR, AGRPAL, FLRIX, FLUAD, FLUHID, FLUTET, FLUVAX, FLVRN, FQDJN, FQUAD, FVXJNR, GNFLU, INFLTA, INFLUV, PANVAX, VAXGRP, VGRJNR
FQUAD	AFLR, AGRPAL, FLRIX, FLUAD, FLUHID, FLUTET, FLUVAX, FLVRN, FQDJN, FQUAD, FVXJNR, GNFLU, INFLTA, INFLUV, PANVAX, VAXGRP, VGRJNR
FLVRN	AFLR, AGRPAL, FLRIX, FLUAD, FLUHID, FLUTET, FLUVAX, FLVRN, FQDJN, FQUAD, FVXJNR, GNFLU, INFLTA, INFLUV, PANVAX, VAXGRP, VGRJNR
GNDIP	ADCL, ADPO, ADT, BOOST, BOIPV, CDT, DTP, DTPA, GNDIP, HEXAXM, IFHX, IFIP, IFPA, IFX, IFXB, PDCL, PLCL, QDCL, TCL, TDT
GNFLU	AFLR, AGRPAL, FLRIX, FLUTET, FLUVAX, FLVRN, FQDJN, FQUAD, FVXJNR, GNFLU, INFLUV, PANVAX, VAXGRP, VGRJNR
GNHEP	CMX, ENGP, GNHEP, HBV, HBVP, HEXAXM, IFHX, IFPA, IFXB
GNHIB	CMX, GNHIB, HBOC, HBX, HEXAXM, IFHX, MNTRX, PDCL, PLCL, PRPD, PRPOMP, PRPT

Vaccine Code	Equivalents
GNHPA	AVAXM, GNHPA, HATWAD, HATWNJ, HAVAD, HAVAQ, HAVJ, VAQAD, VIVAXM
GNHPV	GNHPV, HPV, HPVCX, HPVNI
GNJEN	GNJEN, IMOJEV, JESPCT, JEVAX
GNMEA	GNMEA, MMR, MMRCSL, MMRSKB, PROQAD, PRXTET
GNMEN	GNMEN, MENACT, MENJUG, MENTEC, MNTRX, MENVO, NEISVC
GNMNB	BEXO, GNMNB
GNMUM	GNMUM, MMR, MMRCSL, MMRSKB, PROQAD, PRXTET
GNPNE	GNPNE, PRVNR, PRVTH, SYNFLX
GNPOL	ADPO, BOIPV, GNPOL, HEXAXM, IFHX, IFIP, IFPA, IPV, OPV, PDCL, PLCL, QDCL
GNROX	GNROX, ROTRIX, ROTTEQ
GNRUB	GNRUB, MMR, MMRCSL, MMRSKB, PROQAD, PRXTET
GNTET	ADCL, ADPO, ADT, BOOST, BOIPV, CDT, DTP, DTPA, GNTET, HEXAXM, IFHX, IFIP, IFPA, IFX, IFXB, PDCL, PLCL, QDCL, TCL, TDT, TETTOX
GNVAR	GNVAR, PROQAD, PRXTET, VLRIX, VRVAX
GNYFEV	GNYFEV, STAMRL,
HATWAD	AVAXM, GNHPA, HATWAD, HATWNJ, HAVAD, HAVAQ, HAVJ, VAQAD, VIVAXM
HATWNJ	AVAXM, GNHPA, HATWAD, HATWNJ, HAVAD, HAVAQ, HAVJ, VAQAD, VIVAXM
HAVAD	AVAXM, GNHPA, HATWAD, HATWNJ, HAVAD, HAVAQ, HAVJ, VAQAD, VIVAXM
HAVAQ	AVAXM, GNHPA, HATWAD, HATWNJ, HAVAD, HAVAQ, HAVJ, VAQAD, VIVAXM
HAVJ	AVAXM, GNHPA, HATWAD, HATWNJ, HAVAD, HAVAQ, HAVJ, VAQAD, VIVAXM

Vaccine Code	Equivalents
HBOC	CMX, GNHIB, HBOC, HBX, HEXAXM, IFHX, MNTRX, PDCL, PLCL, PRPD, PRPOMP, PRPT
HBV	CMX, ENGP, GNHEP, HBV, HBVP, HBVXA, HEXAXM, IFHX, IFPA, IFXB
HBVP	CMX, ENGP, GNHEP, HBV, HBVP, HBVXA, HEXAXM, IFHX, IFPA, IFXB
HBVXA	CMX, ENGP, GNHEP, HBV, HBVP, HBVXA, HEXAXM, IFHX, IFPA, IFXB
HBX	CMX, GNHIB, HBOC, HBX, HEXAXM, IFHX, MNTRX, PDCL, PLCL, PRPD, PRPOMP, PRPT
HDCV	HDCV, PCECV
HEXAXM	ADCL, ADPO, ADT, BOOST, BOIPV, CDT, CMX, DTP, DTPA, ENGBA, ENGP, GNDIP, GNHEP, GNHIB, GNPOL, GNTET, HBOC, HBV, HBVP, HBVXA, HBX, HEXAXM, IFHX, IFIP, IFPA, IFX, IFXB, IPV, MNTRX, OPV, P, PDCL, PLCL, PRPD, PRPOMP, PRPT, QDCL, TCL, TDT, TETTOX
HPV	GNHPV, HPV, HPVXCX, HPVNIIN
HPVXCX	GNHPV, HPV, HPVXCX, HPVNIIN
HPVNIIN	GNHPV, HPV, HPVXCX, HPVNIIN
IFHX	ADCL, ADPO, ADT, BOOST, BOIPV, CDT, CMX, DTP, DTPA, ENGBA, ENGP, GNDIP, GNHEP, GNHIB, GNPOL, GNTET, HBOC, HBV, HBVP, HBVXA, HBX, HEXAXM, IFHX, IFIP, IFPA, IFX, IFXB, IPV, MNTRX, OPV, P, PDCL, PLCL, PRPD, PRPOMP, PRPT, QDCL, TCL, TDT, TETTOX
IFIP	ADCL, ADPO, ADT, BOOST, BOIPV, CDT, DTP, DTPA, GNDIP, GNPOL, GNTET, HEXAXM, IFHX, IFIP, IFPA, IFX, IFXB, IPV, OPV, P, PDCL, PLCL, QDCL, TCL, TDT, TETTOX
IFPA	ADCL, ADPO, ADT, BOOST, BOIPV, CDT, CMX, DTP, DTPA, ENGBA, ENGP, GNDIP, GNHEP, GNPOL, GNTET, HBV, HBVP, HBVXA, HEXAXM, IFHX, IFIP, IFPA, IFX, IFXB, IPV, OPV, P, PDCL, PLCL, QDCL, TCL, TDT, TETTOX
IFX	ADCL, ADPO, ADT, BOOST, BOIPV, CDT, DTP, DTPA, GNDIP, GNTET, HEXAXM, IFHX, IFIP, IFPA, IFX, IFXB, P, PDCL, PLCL, QDCL, TCL, TDT, TETTOX
IFXB	ADCL, ADPO, ADT, BOOST, BOIPV, CDT, CMX, DTP, DTPA, ENGBA, ENGP, GNDIP, GNHEP, GNTET, HBV, HBVP, HBVXA, HEXAXM, IFHX, IFIP, IFPA, IFX, IFXB, P, PDCL, PLCL, QDCL, TCL, TDT, TETTOX

Vaccine Code	Equivalents
IMOJEV	GNJEN, IMOJEV, JESPCT, JEVAX
INFLTA	AFLR, AGRPAL, FLRIX, FLUAD, FLUHID, FLUTET, FLUVAX, FLVRN, FQDJN, FQUAD, FVXJNR, GNFLU, INFLTA, INFLUV, PANVAX, VAXGRP, VGRJNR
INFLUV	AFLR, AGRPAL, FLRIX, FLUAD, FLUHID, FLUTET, FLUVAX, FLVRN, FQDJN, FQUAD, FVXJNR, GNFLU, INFLTA, INFLUV, PANVAX, VAXGRP, VGRJNR
IPV	ADPO, BOIPV, GNPOL, HEXAXM, IFHX, IFIP, IFPA, IPV, OPV, PDCL, PLCL, QDCL
JESPCT	GNJEN, IMOJEV, JESPCT, JEVAX
JEVAX	GNJEN, IMOJEV, JESPCT, JEVAX,
MENACT	GNMEN, MENACT, MENJUG, MENTEC, MNTRX, MENVO, NEISVC
MENGO	MENGO, MENUME, MENVAX, NIMRIX
MENJUG	GNMEN, MENACT, MENJUG, MENTEC, MNTRX, MENVO, NEISVC
MENTEC	GNMEN, MENACT, MENJUG, MENTEC, MNTRX, MENVO, NEISVC
MENUME	MENGO, MENUME, MENVAX, NIMRIX
MENVAX	MENGO, MENUME, MENVAX, NIMRIX
MENVO	GNMEN, MENACT, MENJUG, MENTEC, MNTRX, MENVO, NEISVC
MMR	GNMEA, GNMUM, GNRUB, MMR, MMRCSL, MMRSKB, PROQAD, PRXTET
MMRCSL	GNMEA, GNMUM, GNRUB, MMR, MMRCSL, MMRSKB, PROQAD, PRXTET
MMRSKB	GNMEA, GNMUM, GNRUB, MMR, MMRCSL, MMRSKB, PROQAD, PRXTET
MNTRX	GNMEN, MENACT, MENJUG, MENTEC, MNTRX, MENVO, NEISVC
NEISVC	GNMEN, MENACT, MENJUG, MENTEC, MNTRX, MENVO, NEISVC
NIMRIX	MENGO, MENUME, MENVAX, NIMRIX
OPV	ADPO, BOIPV, GNPOL, HEXAXM, IFHX, IFIP, IFPA, IPV, OPV, PDCL, PLCL, QDCL
P	ADCL, ADPO, BOOST, BOIPV, DTP, DTPA, HEXAXM, IFHX, IFIP, IFPA, IFX, IFXB, P, PDCL, PLCL, QDCL, TCL

Vaccine Code	Equivalents
PANVAX	AFLR, AGRPAL, FLRIX, FLUAD, FLUHID, FLUTET, FLUVAX, FLVRN, FQDJN, FQUAD, FVXJNR, GNFLU, INFLTA, INFLUV, PANVAX, VAXGRP, VGRJNR
PCECV	HDCV, PCECV
PDCL	ADCL, ADPO, ADT, BOOST, BOIPV, CDT, CMX, DTP, DTPA, GNDIP, GNHIB, GNPOL, GNTET, HBOC, HBX, HEXAXM, IFHX, IFIP, IFPA, IFX, IFXB, IPV, OPV, MNTRX, P, PDCL, PLCL, PRPD, PRPOMP, PRPT, QDCL, TCL, TDT, TETTOX
PLCL	ADCL, ADPO, ADT, BOOST, BOIPV, CDT, CMX, DTP, DTPA, GNDIP, GNHIB, GNPOL, GNTET, HBOC, HBX, HEXAXM, IFHX, IFIP, IFPA, IFX, IFXB, IPV, MNTRX, OPV, P, PDCL, PLCL, PRPD, PRPOMP, PRPT, QDCL, TCL, TDT, TETTOX
PNEUMO	PNEUMO
PROQAD	GNMEA, GNMUM, GNRUB, MMR, MMRCSL, MMRSKB, PROQAD, PRXTET
PRPD	CMX, GNHIB, HBOC, HBX, HEXAXM, IFHX, MNTRX, PDCL, PLCL, PRPD, PRPOMP, PRPT
PRPOMP	CMX, GNHIB, HBOC, HBX, HEXAXM, IFHX, MNTRX, PDCL, PLCL, PRPD, PRPOMP, PRPT
PRPT	CMX, GNHIB, HBOC, HBX, HEXAXM, IFHX, MNTRX, PDCL, PLCL, PRPD, PRPOMP, PRPT
PRVNR	GNPNE, PRVNR, PRVTH, SYNFLX
PRVTH	GNPNE, PRVNR, PRVTH, SYNFLX
PRXTET	GNMEA, GNMUM, GNRUB, MMR, MMRCSL, MMRSKB, PROQAD, PRXTET
QDCL	ADCL, ADPO, ADT, BOOST, BOIPV, CDT, DTP, DTPA, GNDIP, GNPOL, GNTET, HEXAXM, IFHX, IFIP, IFPA, IFX, IFXB, IPV, OPV, P, PDCL, PLCL, QDCL, TCL, TDT, TETTOX
ROTRIX	GNROX, ROTTEQ, ROTRIX
ROTTEQ	GNROX, ROTRIX, ROTTEQ
STAMRL	STAMRL, GNYFEV
SYNFLX	GNPNE, PRVNR, PRVTH, SYNFLX
TCL	ADCL, ADPO, ADT, BOOST, BOIPV, CDT, DTP, DTPA, GNDIP, GNTET, HEXAXM, IFHX, IFIP, IFPA, IFX, IFXB, P, PDCL, PLCL, QDCL, TCL, TDT, TETTOX

Vaccine Code	Equivalents
TDT	ADCL, ADPO, ADT, BOOST, BOIPV, CDT, DTP, DTPA, GNDIP, GNTET, HEXAXM, IFHX, IFIP, IFPA, IFX, IFXB, PDCL, PLCL, QDCL, TCL, TDT, TETTOX
TETTOX	ADCL, ADPO, ADT, BOOST, BOIPV, CDT, DTP, DTPA, GNDIP, GNTET, HEXAXM, IFHX, IFIP, IFPA, IFX, IFXB, PDCL, PLCL, QDCL, TCL, TDT, TETTOX
TYPHRX	TYPHRX, TYPHVI, VIVAXM, VIVOTF
TYPHVI	TYPHRX, TYPHVI, VIVAXM, VIVOTF
VAQAD	AVAXM, GNHPA, HATWAD, HATWNJ, HAVAD, HAVAQ, HAVJ, VAQAD, VIVAXM
VAXGRP	AFLR, AGRPAL, FLRIX, FLUAD, FLUHID, FLUTET, FLUVAX, FLVRN, FQDJN, FQUAD, FVXJNR, GNFLU, INFLTA, INFLUV, PANVAX, VAXGRP, VGRJNR
VIVAXM	AVAXM, GNHPA, HATWAD, HATWNJ, HAVAD, HAVAQ, HAVJ, VAQAD, TYPHRX, TYPHVI, VIVAXM, VIVOTF
VIVOTF	TYPHRX, TYPHVI, VIVAXM, VIVOTF
VGRJNR	AFLR, AGRPAL, FLRIX, FLUAD, FLUHID, FLUTET, FLUVAX, FLVRN, FQDJN, FQUAD, FVXJNR, GNFLU, INFLTA, INFLUV, PANVAX, VAXGRP, VGRJNR
VLRX	GNVAR, PROQAD, PRXTET, VLRX, VRVAX
VRVAX	GNVAR, PROQAD, PRXTET, VLRX, VRVAX
ZOTVAX	ZOTVAX

If you have any queries with the above process, or experience any difficulty in setting up your **Immunisation Schedule**, please contact the **Medtech Helpdesk** on **1800 148 165**