

Release Notes

My Health Records Utilities (April 2018)



These release notes contain important information for Medtech users. Please ensure that they are circulated amongst all relevant staff. We suggest that they are filed safely for future reference.

Contents

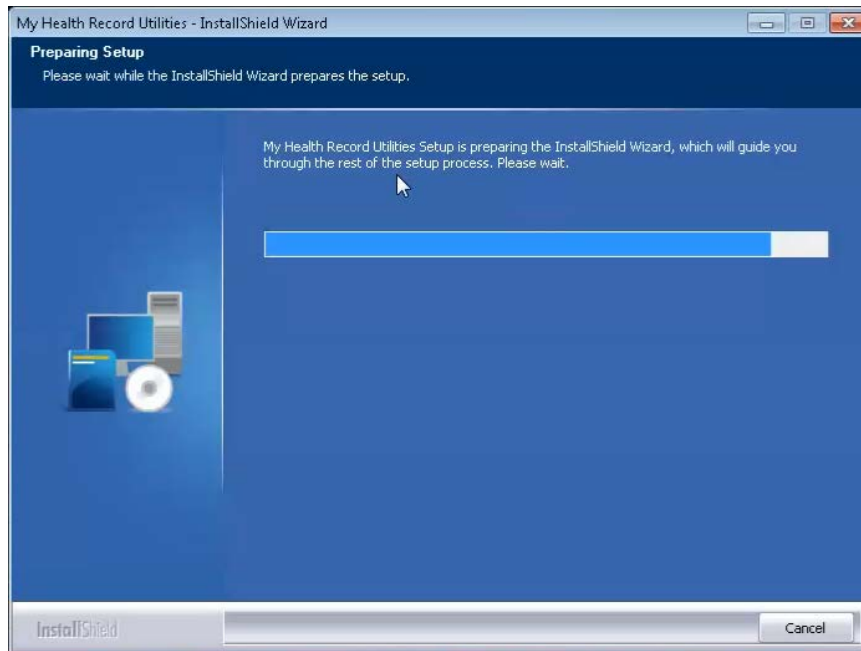
Installation Instructions..... 3

 Upload My Health Record – My Health Record Upload Statistics..... 6

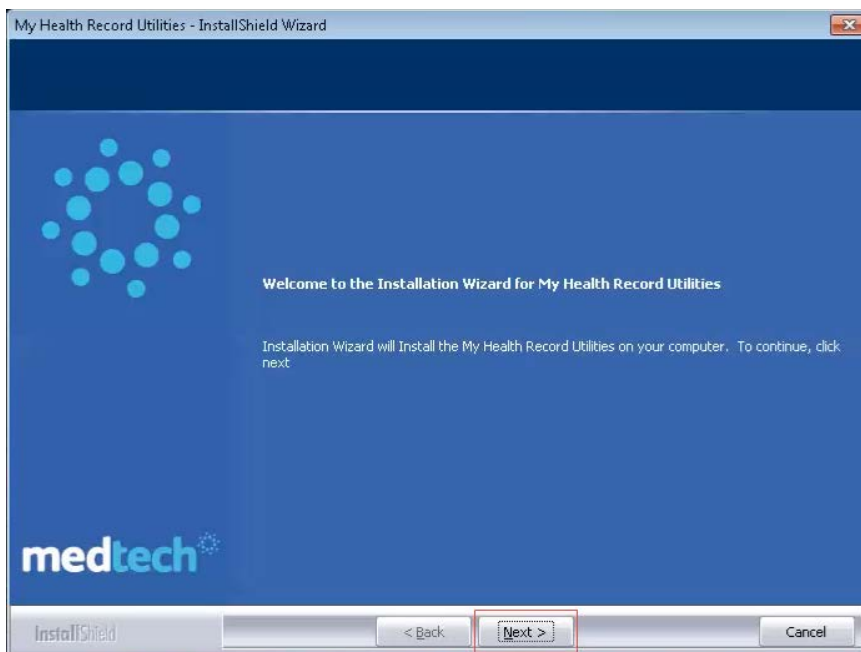
 Upload My Health Record – Parked SHS Documents Utility 8

INSTALLATION INSTRUCTIONS

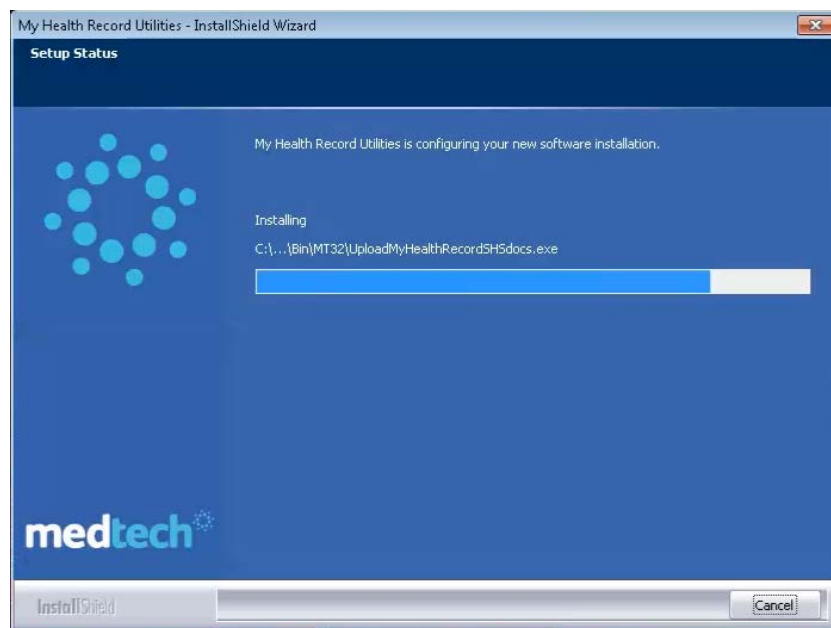
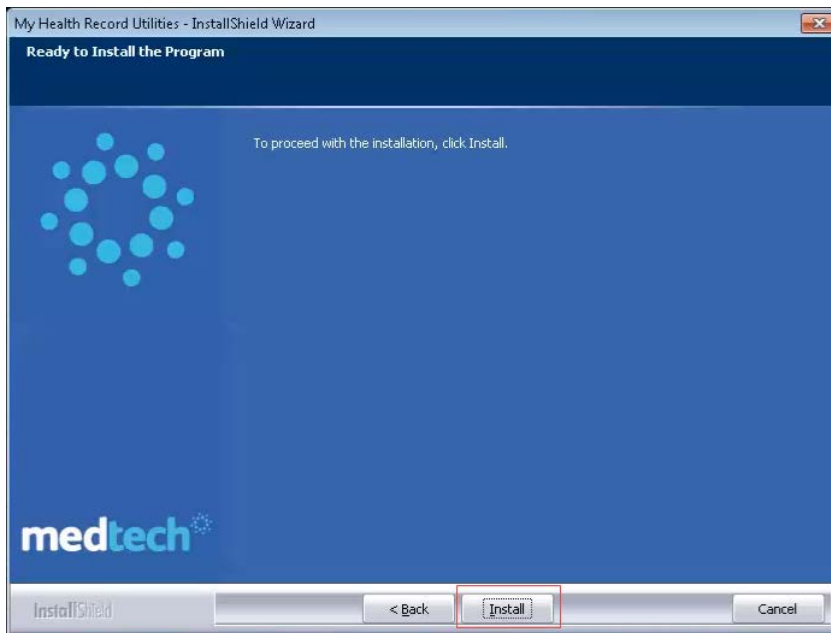
1. Download and double click on the **My Health Record Utilities-Installer.exe** to run the My Health Record Utilities installer.



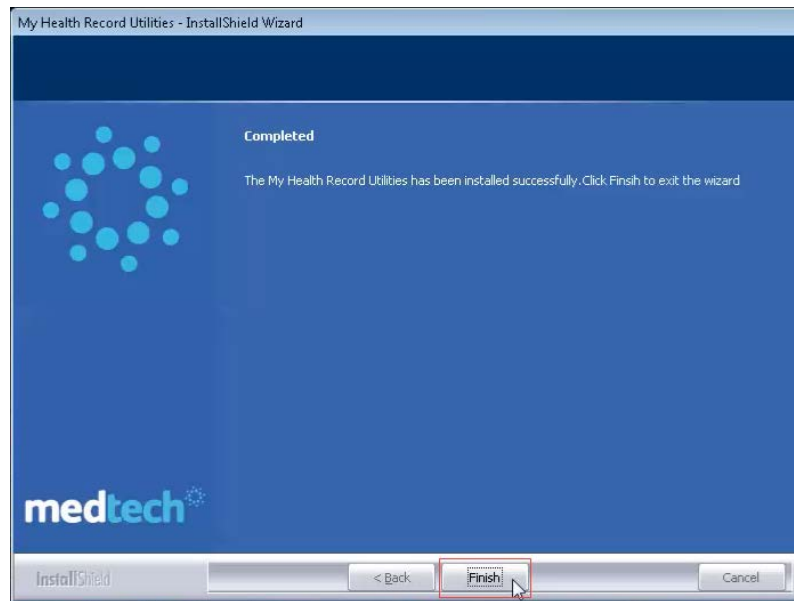
2. Click on the '**Next**' button



3. Click on the 'Install' button to start the installation



- Click on the **'Finish'** button to close the My Health Record Utilities Installer screen



- After the installation, the **'UploadMyHealthRecordSHSdocs'** utility will be available in the `<<MAINDIR>>\Bin` folder and the **'CDAAuditTool'** utility will be available in the `'<<MAINDIR>>\Bin\Addins\CDAAuditTool'` for use by the practice.

Upload My Health Record – My Health Record Upload Statistics

This utility assists with generating a summary of the statistics of uploaded e-health documents to the ADHA server.

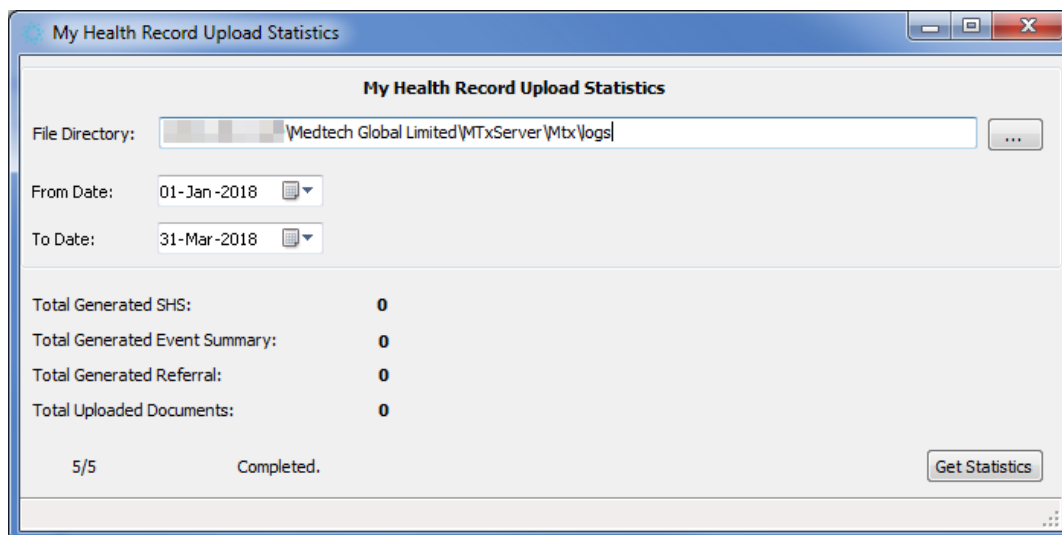
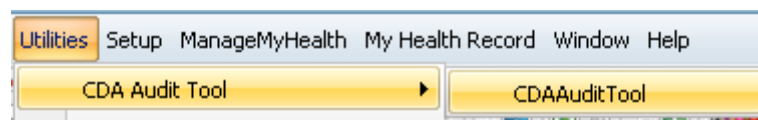
This utility should be used by a practice to analyse and check your current practice database to ensure that you have met all the necessary ePIP targets.

PRE REQUISITES

Your practices CDA log files should be available in the CDA Bridge folder of your Medtech Evolution installation. The CDA log files are utilised by this utility to extract the statistics of the uploaded documents.

This utility must be executed from the Medtech Evolution Server where the CDA logs are available.

1. Open the My Health Record Statistics screen from menu **Utilities > CDA Audit Tool > CDAAuditTool** within Medtech Evolution.



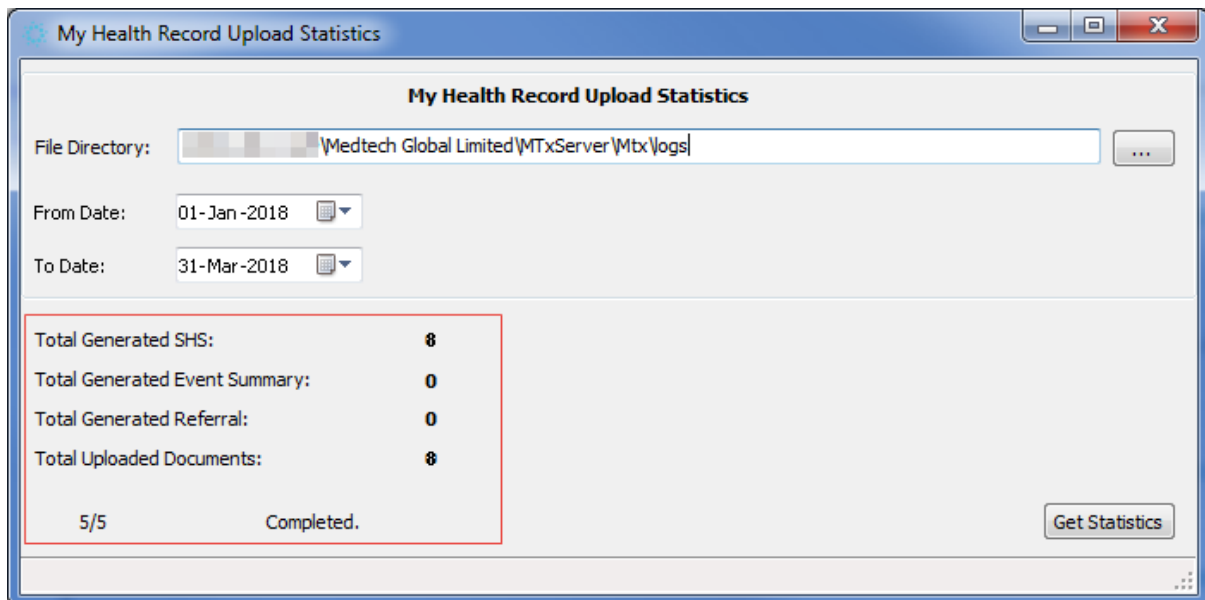
2. Navigate to the file path where the CDA logs are available in the 'File Directory' field
3. Choose the **From Date** and **To Date** for which you want to generate the upload statistics

IMPORTANT NOTE

The selected **File Directory** path and **From Date & To Date** selection will be saved on closing the utility and will be displayed when opening the utility on subsequent occasions.

Remember to **check and modify** the **From Date & To Date** fields the next time you run the utility.

4. Click the **Get Statistics** button to process the utility and generate the summary of uploaded documents within the date range specified
5. The 'Total Generated SHS', 'Total Generated Event Summary', 'Total Generated Referral' and 'Total Uploaded Documents' count will be displayed in the **My Health Record Upload Statistics** screen
6. The **Total Uploaded Documents** count is the actual number of documents uploaded to ADHA server.



Upload My Health Record – Parked SHS Documents Utility

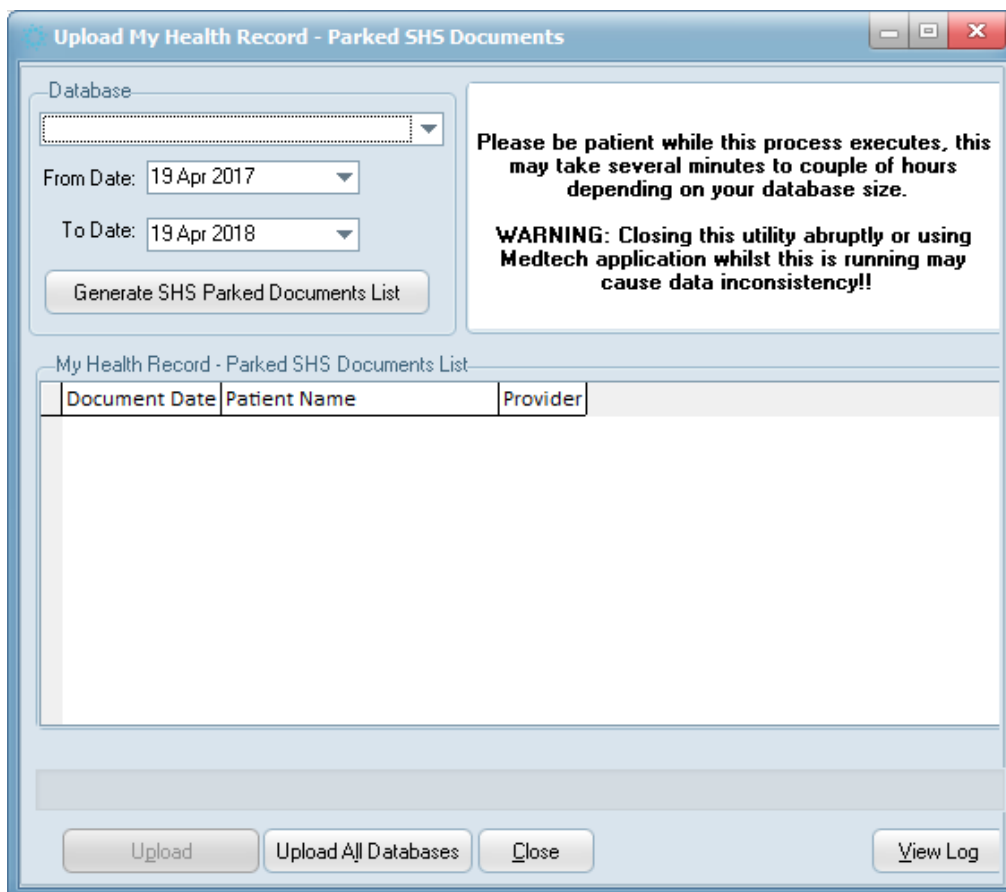
This utility assists with uploading pending/parked My Health Record SHS documents to the ADHA server.

This utility should be used by a practice to upload any pending or parked My Health Record SHS documents that have not yet been processed and loaded onto the ADHA server.

PRE REQUISITES

Before running this utility, the CDA Bridge should be running in the task scheduler or through command prompt.

1. Double-click on the **UploadMyHealthRecordSHSdocs.exe** available under the <<MAINDIR>>\ Bin folder of your Medtech Evolution installation



2. Select the required **Database**
3. Select the **From Date** and **To Date**
4. Click the **Generate SHS Parked Documents List** button. This will generate and display a list of all pending My Health Record SHS documents available within the selected Database
5. Click the **Upload** button to upload the list of Parked Documents to ADHA server

6. Click the **Upload All Databases** button to upload Parked Documents from ALL Databases to the ADHA Server

7. Two log files will be created in the <<MAINDIR>>\ **Bin** folder of your Medtech Evolution installation folder:
 - a. **UploadMyHealthRecordSHSdocs.log** which will display the details related to the processing of all records selected to upload to the ADHA server.

 - b. **<Datetimestamp>_UploadMHRSummaryLog.log** which will display a summary of the processed records which were uploaded to the ADHA server.

8. The utility can be configured to also be silently executed from the command line using the below command:

C:\Program Files\MedtechAUEvolution\Bin\UploadMyHealthRecordSHSdocs.exe -a -s

For further information on these utilities, or any other queries, please contact Medtech Support via:

- Medtech Evolution application [Help ► Contact Support]
- Email to supportau@medtechglobal.com
- Fax to 03 9690 8010 - Attn: Medtech Support
- Phone on 1800 148 165