

My Health Record Update Query Builder Update Installation

Medtech32



These release notes contain important information for Medtech32 users. Please ensure that they are circulated amongst all relevant staff. We suggest that they are filed safely for future reference

Table of Contents

<u>Prerequisites</u>	<u>3</u>
<u>Purpose of My Health Record Query Builder Update</u>	<u>4</u>
<u>DATA SHEET VIEW</u>	<u>5</u>
<u>My Health Record Query Builder Update Instructions</u>	<u>6</u>

Prerequisites

Please review the following prerequisites and ensure that they are met prior to running the update:

- Ensure the person who will be performing the update has **READ THROUGH** the Installation Instructions

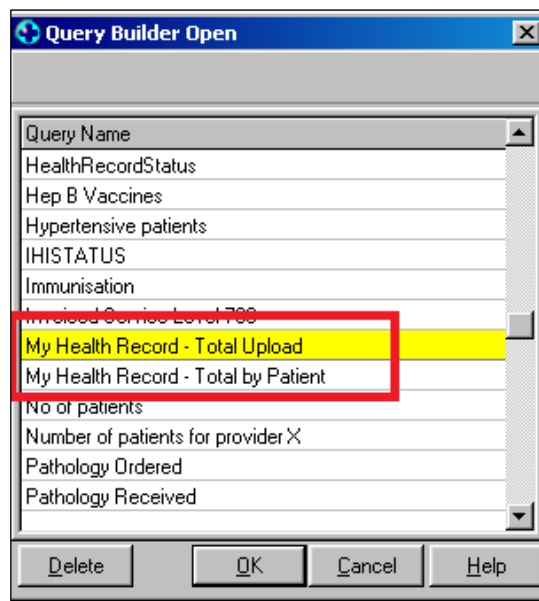
IMPORTANT: This document contains valuable information that, if not read, could seriously affect the update process and/or possible down time of your network.

- This tool has to be run on the Server
- Ensure you are ALWAYS logged onto Windows with **ADMINISTRATIVE RIGHTS** when performing ANY installation, update or maintenance tasks
- It is recommended that all users (including remote users) have logged out. You may face some performance issues during IHI Verification or CDA Document Upload if you run this utility when users are logged in
- CDA Bridge must be running

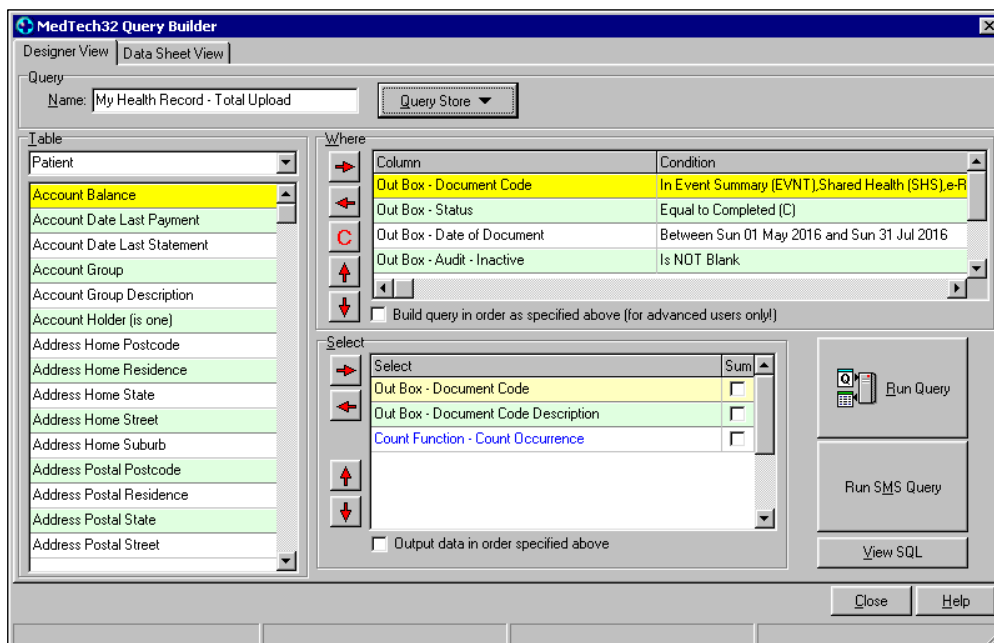
Purpose of My Health Record Query Builder Update

Running this utility will help to add two new queries in Query Builder:

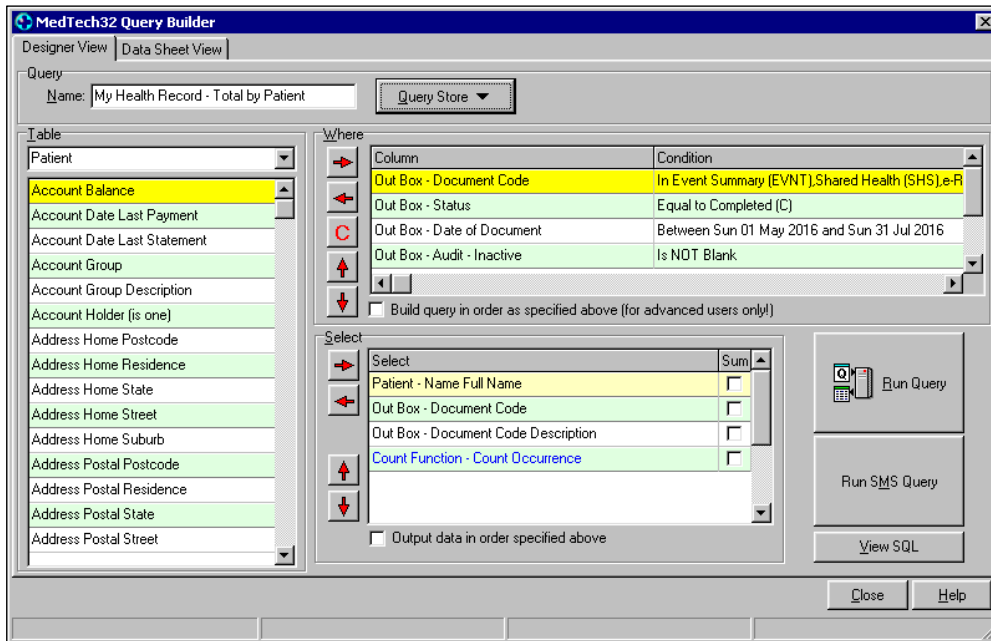
- **My Health Record – Total Upload:** use to get the total count of all Shared Health, Event summary, e-Referral documents uploaded successfully.
- **My Health Record – Total by patient:** use to get the total count of all Shared Health, Event summary, e-Referral documents uploaded successfully for individual patients.



My Health Record – Total Upload



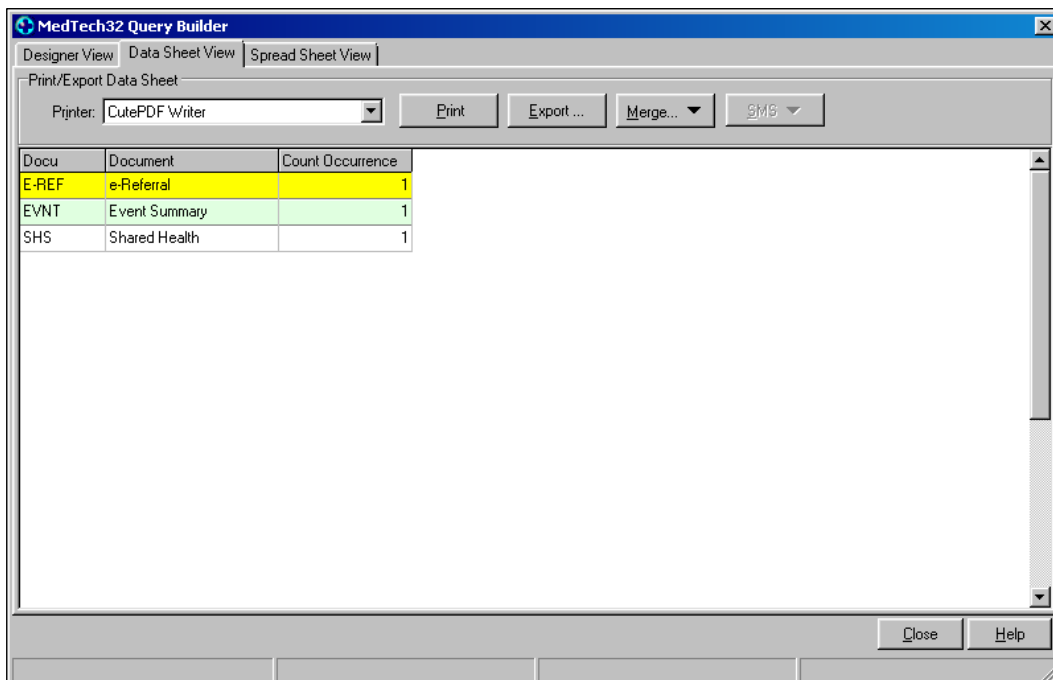
My Health Record – Total by Patient



NOTE: By default, the Date of Document is set to 1 May 2016 to 31 July 2016. Users can change the criteria based on their requirement by entering the desired period in the condition field for 'Date of Document'.

Data Sheet View

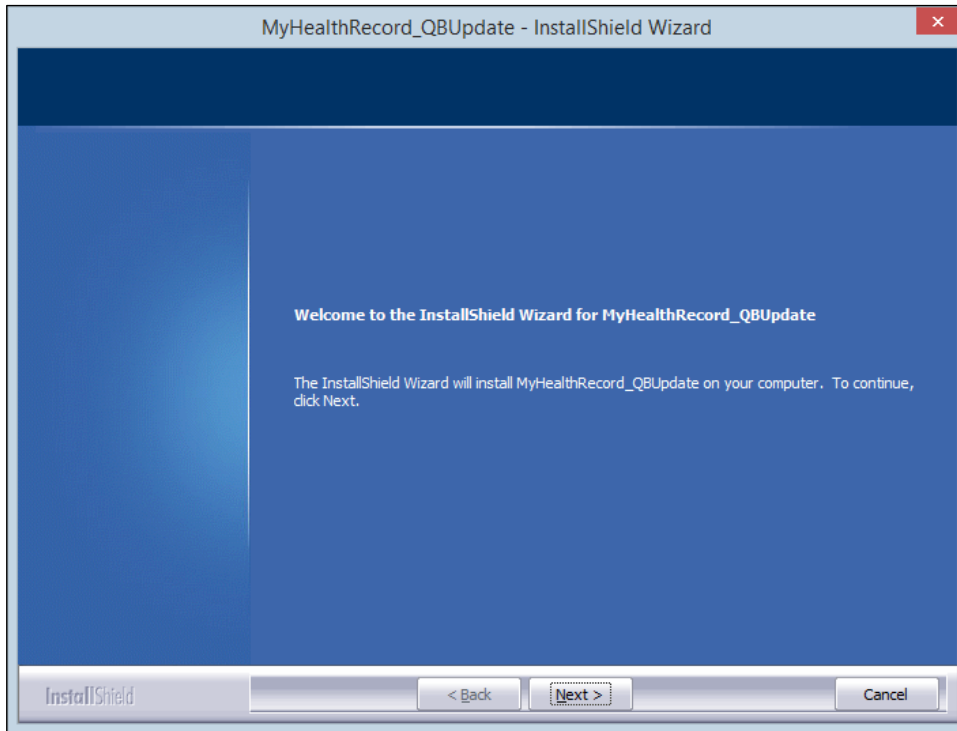
The results are grouped and displayed based on the document type:



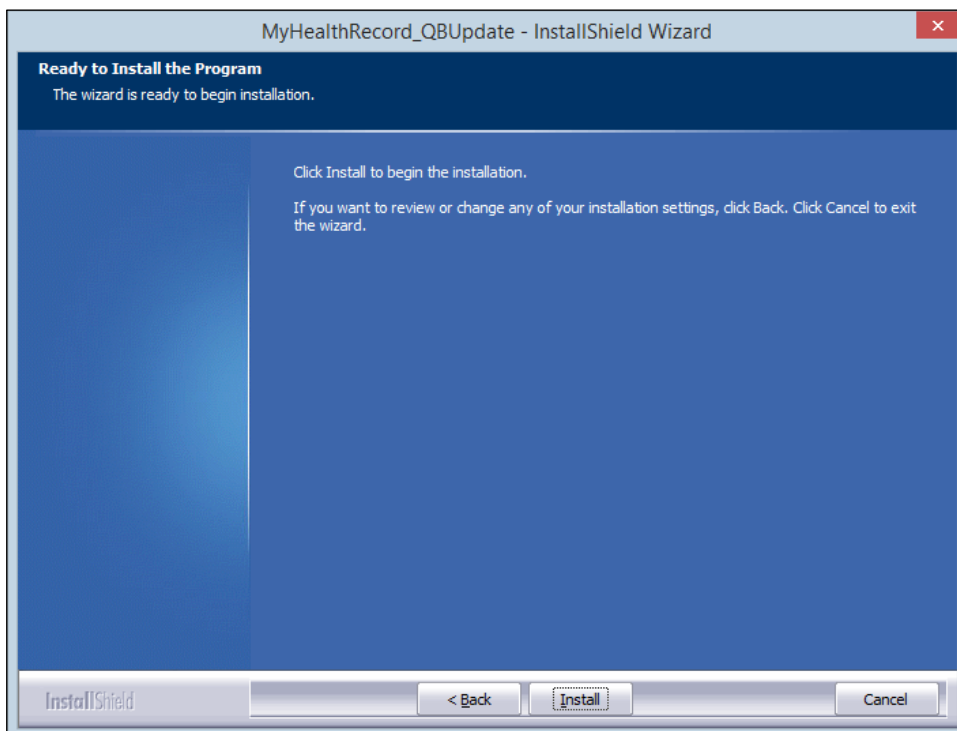
My Health Record Query Builder Update Instructions

To install My Health Record-QB Update, follow the instructions below:

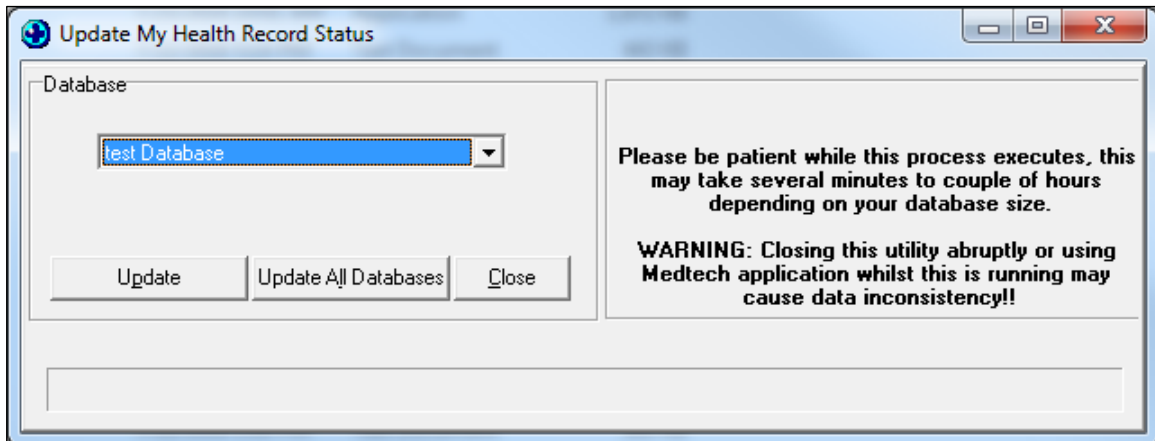
1. Double click or right click the My Health Record-QB Update.exe and click 'Run as administrator' to launch the Installation Wizard.



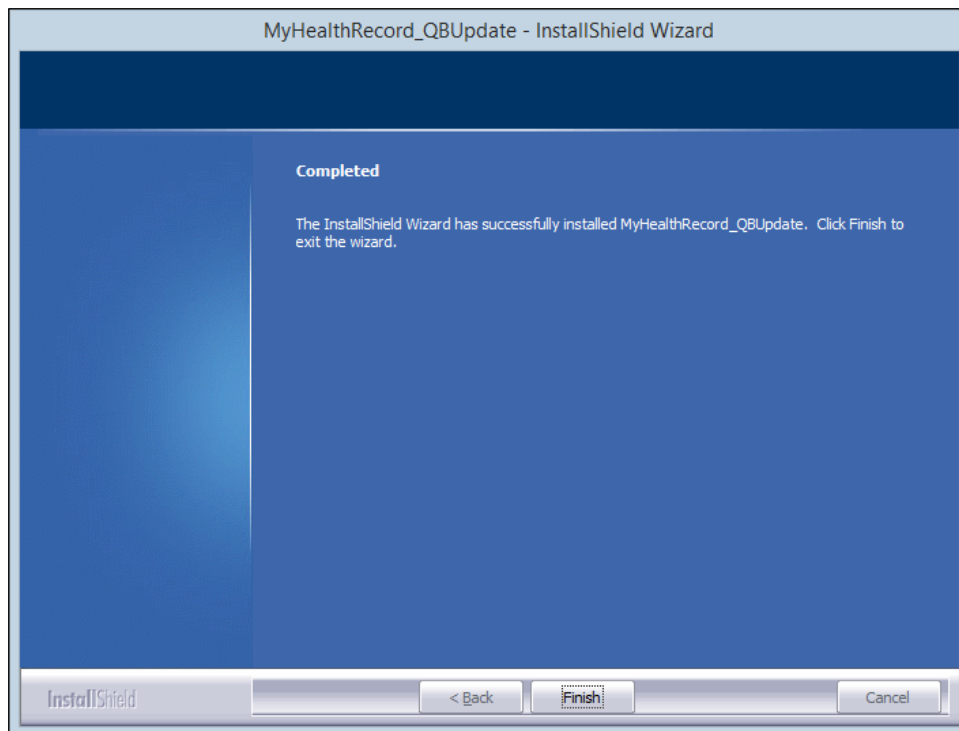
2. Click on '**Next**' to start the installation.



3. Click on '**Install**' to continue the installation.



4. This utility will run automatically to update My Health Records and the updated health records will be updated to NEHTA.



5. Click '**Finish**' to exit the wizard.

Further information on this update, please contact Medtech Support via:

- Medtech32 application [**Help ► Contact Support**]
- Email: support@medtechglobal.com
- Phone: **1800 148 165**
- Fax: 03 9690 8010 - Attn: Medtech Support