

Medtech32 Database Validation Utility

Version 1.0 – Install Guide



This document contains important information for Medtech users. Please ensure that it is circulated amongst all relevant staff. We suggest that the document is filed safely for future reference.

Table of Contents

- 1. Installation Prerequisites Checklist3
- 2. Location of Installer3
- 3. Medtech Evolution IBHealth Check Tool Installation4

1. Installation Prerequisites Checklist

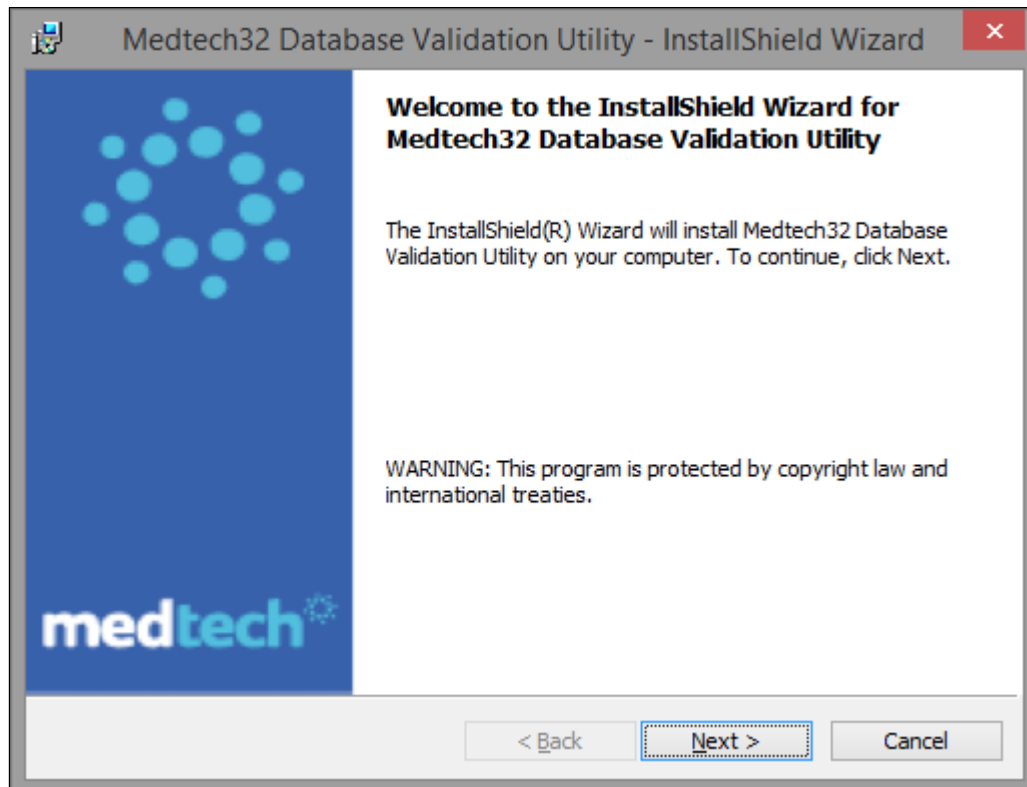
1.	Ensure you are logged onto Windows with Full Administrative rights when performing ANY installation, update or maintenance tasks.	<input type="checkbox"/>
2.	Ensure you are logged onto the Medtech32 Database or Application Server.	<input type="checkbox"/>
3.	Check that this document has been reviewed and understood.	<input type="checkbox"/>

2. Location of Installer

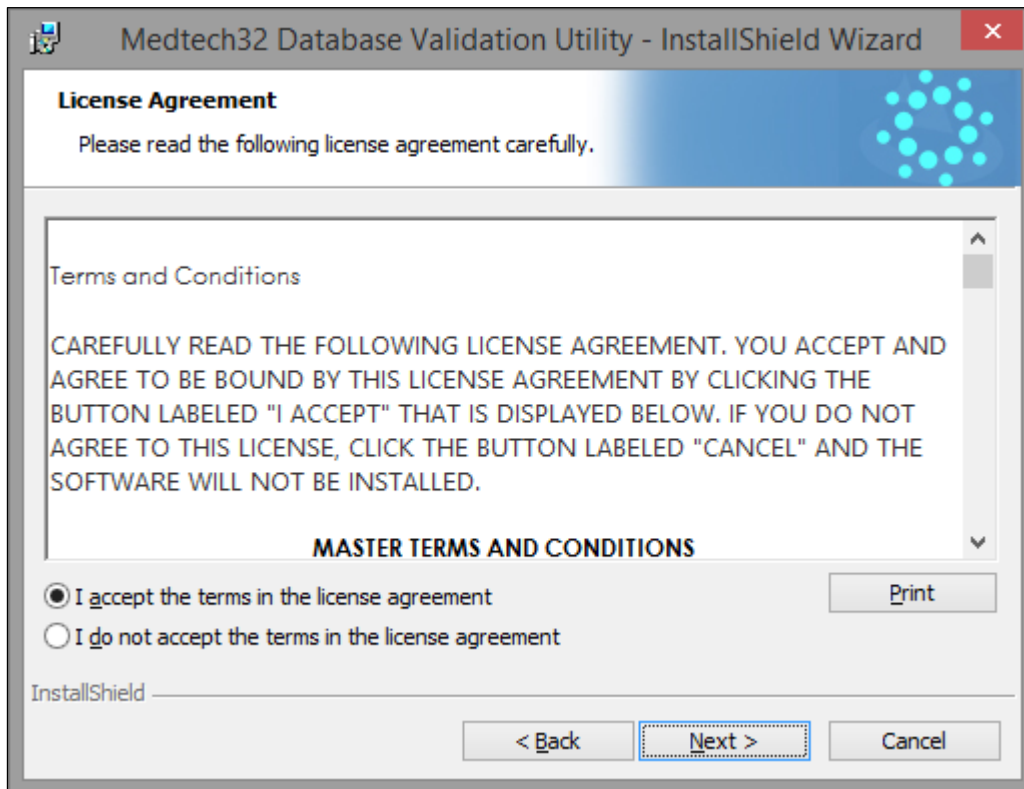
1. Visit our website at <http://www.medtechglobal.com>.
2. Select "**New Zealand**" in the region drop down menu (top right-hand side of the window).
3. Select the menu **Support ▶ Medtech32 Downloads**. The New Zealand Medtech32 Downloads page will be displayed.
4. Locate the Installation package called **Medtech32 Database Validation Utility** in the list.
5. Download the installer "**Medtech32 Database Validation Utility (EXE)**".

3. Medtech32 Database Validation Utility – Installation

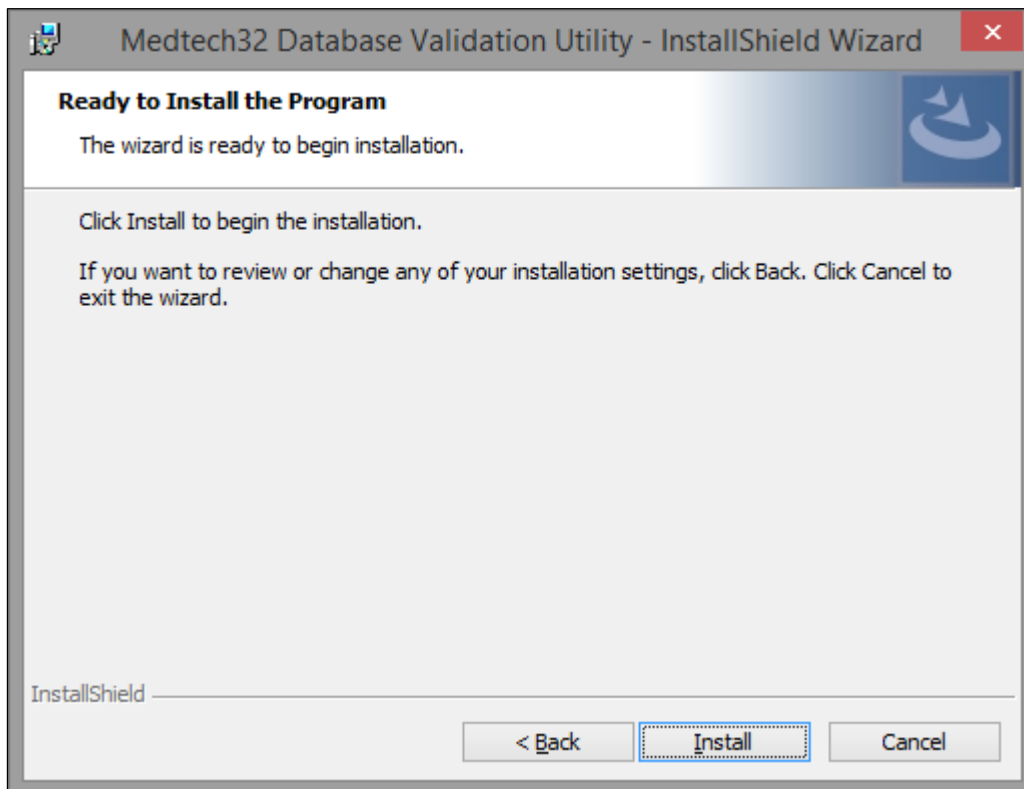
1. Ensure that you have completed and checked all the items in the **Installation Prerequisites Checklist** above.
2. Download the **Medtech32 Database Validation Utility** as described above.
3. Double click on the **EXE** to start the installation process.



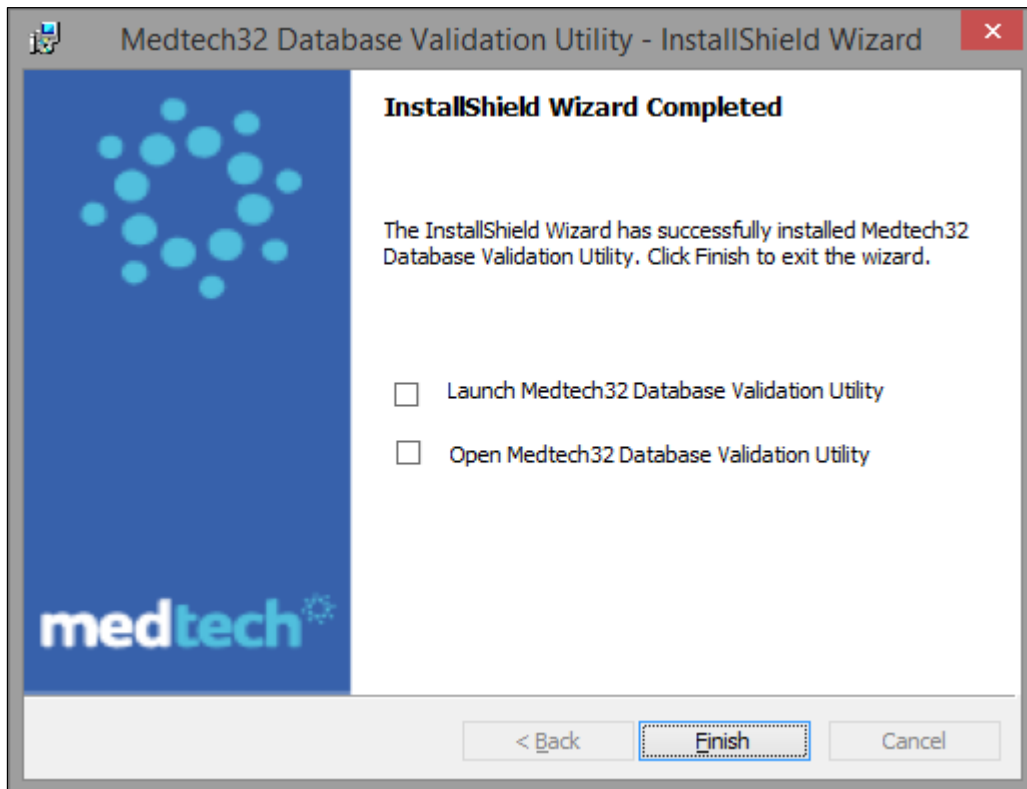
4. Click the **'Next'** button to continue.



5. Select the "I accept the terms in the license agreement" radio button and click the 'Next' button.



6. Click the 'Install' button.



7. Click the '**Finish**' button to complete the installation
8. Navigate to the Desktop and find the shortcut named "**Medtech32 Database Validation Utility**".

For further information, or any other queries regarding the changes in this release, please contact Medtech Support as follows:

- Medtech32 application [**Help ► Contact Support**]
- Online Chat: www.medtechglobal.com
- Email: support@medtechglobal.com
- Phone: **0800 2 MEDTECH (633 832)**